

Network Projector Control

Control your computer/video projectors with ease.

The EIKI NPC-1 system lets you maintain projectors and support end users through your TCP/IP network... from across the room, or around the world.

NPC-1

The EIKI NPC-1 system consists of a palm-sized projector-to-network interface, and software with basic features permitting you to monitor projector status and manage projector functions. And optional software is available to support multiple projector control and projector alerts.



- Universal**
Works with most projectors.*
- Easy to Use**
Requires no programming.
- Precise Control**
There is no "refresh" delay.
- Secure System**
Reliable Hardware.
Smart Software.



***EIKI Means Projector...
and more!***

NPC-1 Interface Hardware



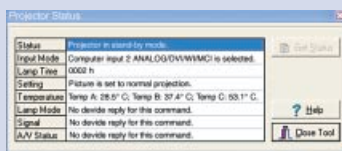
Simple Installation.
This palm-sized, unobtrusive device is quickly and easily mounted anywhere.

Simple Connections.
Connect DB9 to projector, RJ45 to network, DC plug to AC via power adapter.

SPECIFICATIONS:

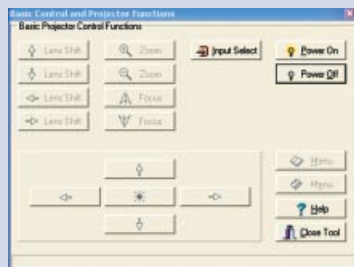
Processor	16 bit
Memory	512 KB
LAN Interface	1 x RJ45f (100Base-TX 10/100 Mbps, auto-detecting)
Serial Interface	1 x DB9m (RS232 DTE male, 50 bps – 230 bps)
Protocols	TCP, IP, UDP, DHCP, ICMP
Power Requirements	DC 9 V to 30 V, 300 mA (max.) at 9 V
Operating Temp.....	0 – 55°C, 32 – 131°F
Operating Humidity	5 – 95% RH
Dimensions (H x W x D, including ears)	3.95 x 3.54 x 0.87 in. (100.4 x 90 x 22 mm)
Surge Protection	15KV ESD protection for serial port
Magnetic Isolation	1.5KV for Ethernet
Regulatory Approvals	FCC, CE, UL, CUL
Warranty	3 Years

NetControl Starter Software



Monitor the Projector.
Check its status, including input mode selected, lamp time consumed, temperature.

Manage the Projector.
Control standard functions, including input selection, lens operation, On and Off.



SYSTEM REQUIREMENTS:

- Intel® Pentium® II/400 MHz or compatible.
- Microsoft® Windows® 98SE, ME, NT (SP5), 2000 (SP3), or XP.
- 64 MB RAM (128 MB recommended).
- Network adapter.
- Access to TCP/IP network.
- 23 MB hard disk space (full install).
- CD-ROM drive.
- XGA or higher resolution monitor (1024x768, 256 color).
- Mouse or other pointing device.

Key Features:

Universal Network Control - Preconfigured for EIKI projectors, NPC-1 can control most projectors*... from EIKI or other manufacturers, in current production or legacy... with a simple file download**.

Easy To Configure and Use - NPC-1 requires no programming. The NetControl software locates the NPC-1 on the network and assigns the projector. Only the control program on the computer gets updates.

Precision Command Control - There is no delay time between command and execution. True simultaneous execution of the same command on multiple devices is built-in (with the NetControl Advanced Package).

Maximum Projector Security - The brains of the system are in the computer... not the controller. Even if the projector and controller are both disabled, the system knows (with the NetControl Advanced Package).

* The projector must be RS-232 controllable, and the control code must be available and comply with the conventional control standards implemented in the NPC-1.

** The required RS-232 control code must be already included in the NetControl Starter Package Online Update. If not, it will be added promptly and at no charge.

CONTENTS:

NPC-1 network device, Getting Started Guide, CD with NetControl 1.0 Starter Package, Power adapter (100 -240 V, 50/60 Hz), European power plug adapter.

Expand the Power of Your NPC-1 System, with the Optional NetControl Advanced Software Package:

- Get instant access to every projector in the NPC-1 system, easily.
- Take greater control: get menu level selections and adjustments.
- Assign projector properties: serial number, other types of information.
- Create groups of projectors: simultaneously address many projectors.
- Create events for projectors and groups: set future behavior to occur.
- Get maintenance alerts, such as lamp life, both on-screen and via e-mail.
- Get security alerts, such as failure or theft, both on-screen and via e-mail.

Talk to your EIKI Dealer... the "pro" in projection.



Specifications subject to change without notice.

©2003 EIKI International, Inc. Printed in the USA. 04/15/03

Eiki International, Inc.

30251 Esperanza, Rancho Santa Margarita, CA 92688-2130
Tel: 800-242-3454; Fax: 800-457-3454, E-mail: usa@eiki.com

In Canada, 310 First St.- Unit 2, P.O. Box 156, Midland, ON L4R 4K8
Phone: 800-563-3454, Fax: 800-567-4069 E-mail: canada@eiki.com

Fax-on-Demand: (Toll Free) 877-345-4329 <http://www.eiki.com>