
EIKI

392

Overhead Projector

User Manual

User Manual



IMPORTANT SAFEGUARDS

When using your EIKI 392 overhead projector, basic safety precautions should always be followed, including the following:

1. Read the following instructions carefully before operating the EIKI overhead projector.
2. Make sure that the operating voltage of the overhead projector corresponds to your local voltage.
3. Care must be taken to ensure the smooth airflow of the cooling system. Immediately switch off the machine if the fan is not functioning properly.
4. To avoid the potential electric shock and to ensure the stability of the optical parts, do not disassemble this projector unless you are a qualified electrician and technician.
5. Tilt up the projection mirror before switching on the overhead projector.
6. Disconnect the power plug from the power source when examining or repairing the interior of the projector.
7. Only qualified service personnel should perform the maintenance and repair work.
8. To avoid the potential electrical shock, do not expose this overhead projector to rain, moisture, or other liquids.
9. Let overhead projector cool completely before putting away. Store the power cord properly in the storage area provided.
10. Do not let cord hang over edge of table or counter or touch hot surfaces.
11. For Pluggable equipment, the socket-outlet shall be installed near the equipment and shall be easily accessible.

A Safety Interlock is located on the edge of the cabinet. When the platen of the overhead projector is opened, the power supply will cut off. Please make sure the platen is opened during repair to avoid electric stock

TABLE OF CONTENTS

| | Page |
|-----------------------------------|-------------|
| Name of Parts | 3 |
| Specifications and Technical Data | 4 |
| Operation Procedure | 5 |
| Maintenance & Repair | 6 |

NAME OF PARTS



SPECIFICATIONS AND TECHNICAL DATA

| Lamp | EYB 360 watt |
|---------------------------|--|
| Voltage | 120V/60Hz |
| Lamp changer | Provides space and ability to switch between lamps. Single Lamp Provided |
| Safety switch | Automatic Power Shut Off |
| Working stage | 10" X 10" |
| Projection angle | 360° rotation and tilting angle up to 60° |
| Focal length | Single Element lens f=285mm |
| Light output | 2200 Lumens |
| Packing dimensions | 20.7"X18.7"X13.3" |
| Gross Weight | 21.12 lbs. |

OPERATION PROCEDURE

1. Be sure the voltage of AC outlet corresponds to the projector before connecting the AC power cord.
2. Pull up the post to set up the Head Mirror to an up-right position until the post is locked automatically. (See fig.1)

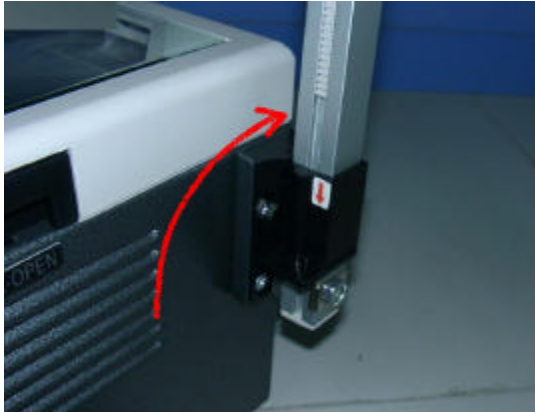


fig. 1

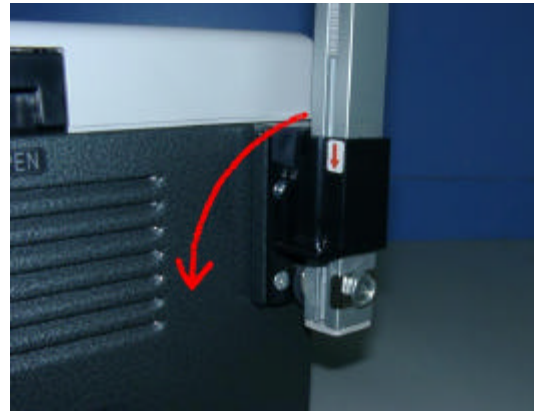


fig. 2

3. Tilt up the projection mirror.
4. Turn the switch on the projector.
5. Adjust the projection mirror horizontally and vertically to center the light on the screen.
6. Place transparency on the projection stage and adjust the focus knob to obtain a sharp image.
7. After projection, press down the Lock Lever to fold down the post to the stopper. (See fig.2)

MAINTENANCE AND REPAIR

1. Replacing the lamp
 - a) Disconnect the power before replacing the lamp.
 - b) Wait until the lamp is cooled down.
 - c) Pull the stage lock to open the projection stage.
 - d) Push the lever to open the condenser lens frame. (See fig.3)
 - e) Remove the defective lamp and replaced it with a new lamp. Adjust the filament to the center of the reflector. (See fig.4)
 - f) Place the condenser lens frame to original position and close the projection stage.



fig. 3

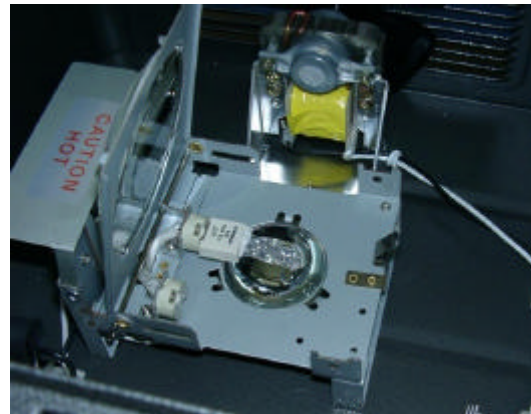


fig. 4

2. Cleaning and assembling of the Fresnel Lens
Remove the Fresnel Lens to wash with water and detergent. Do not use spirit solvent.

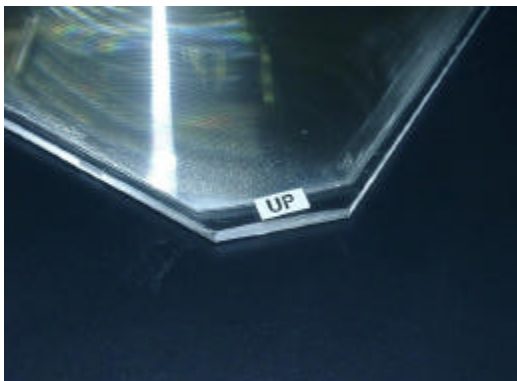


fig. 5

3. To assemble the Fresnel Lens, make sure the “UP” side faced the stage glass. (See fig.5)

Limited 3 Year Warranty

Eiki International warrants this product when sold to the original purchaser from an authorized Eiki dealer, to be free from defective materials and workmanship for a period of 3 years. (Lamp and fuses excluded) Eiki agrees to repair any defect or furnish a new or equal part through an authorized Eiki Service Dealer or Service Center without charge within this period.

It shall be the obligation of the purchaser to provide proof of purchase and cover all transportation charges to and from the service facility. Damage or loss to the product during transit is not covered by this warranty.

This warranty does not apply to appearance items nor to any product whose exterior has been damaged or defaced, not to any product subjected to misuse, abnormal service or handling, nor to any product altered or repaired by other than an Authorized Eiki Service Dealer or Service Center. The provisions of this warranty does not apply to any products purchased or serviced outside the United States, its territories or possessions, except Canada.

This shall be the exclusive written warranty to the original purchaser and neither this warranty nor any other warranty expressed or implied shall extend beyond the period of the time listed. In no event shall Eiki be liable for consequential economic damage to property. Some states do not allow a limitation or exclusion of implied warranties or consequential damages, so the above limitation and exclusion may not apply to you. This warranty gives you specific legal rights and you may have other rights which vary from state to state.

For questions concerning this warranty or to obtain the name and address of the nearest authorized Eiki Service Dealer or Service Center call or write Eiki International Inc. at one of the following:

EIKI International, Inc.
30251 Esperanza
Rancho Santa Margarita
CA 92688-2132
(949) 457-0200

EIKI International, Inc.
2-310 First St. – Unit 2,
Midland, Ontario, Canada
L4R 3N9
(705)-527-4084