



Wireless Collaboration System

EIKIShare L3

User Guide





Content

1、 Use preparation	1
2、 USB screen	1
3、 Mobile phone screen	2
3.1 iOS screen transmission	2
3.2 Android screen transmission	3
3.2.1 APP screen transmission	3
3.2.2 Miracast screen transmission	3
4、 Computer screen projection	4
4.1 Windows client	4
4.2 Mac computer screen projection	5
5、 Screen Exhibit	5
6、 Web background function use	6
6.1 Base settings	6
6.1.1 Switch languages	6
6.1.2 Set the hotspot band	6
6.1.3 Set the hotspot channel	6
6.1.4 Set the hotspot password	6
6.1.5 Set the hotspot name	7
6.1.6 Wired IP settings	7
6.1.7 Factory reset	7
6.2 Function settings	7
6.2.1 Twin-screen	7
6.2.2 Screen mode	7
6.2.3 USB stick playback	7
6.2.4 Upload wallpaper / choose a wallpaper	8
6.2.5 Password display	8
6.2.6 6-bit/8-digit cast code settings	8
6.2.7 Hint cards	8
6.2.8 Miracast connection code	8
6.2.9 Miracast channel mode	9
6.2.10 Miracast reverse control	9
6.2.11 OTA upgrades	9



6.2.12 Airplay streaming.....	9
6.2.13 Centralized control client.....	9
6.3 Display settings.....	10
6.3.1 Screen ratio	10
6.3.2 Screen rotation	10
6.3.3 Airplay resolution	10
6.3.4 HDMI signal settings	10
6.3.5 HDMI resolution.....	10
6.3.6 Miracast mode.....	10
7、 Common problems handling.....	11
7.1 USB screen transmission problem.....	11
7.1.1 The computer plugged into the USB screen transmitter does not respond.....	11
7.1.2 USB screen prompts "Connect to the wireless network"	11
7.1.3 USB screen transmitter pairing.....	12
7.2 Mobile phone transmission problem.....	13
7.2.1 Android phones can't search for hotspots	13
7.2.2 Android phones can't search for devices.....	13
7.2.3 Apple phones can't cast screens	13
7.3 Connect to a wired network	14
7.4 Connect to a wireless network	14
7.5 Disconnect from the wireless Network.....	14
7.6 Change the login password for the web background.....	14

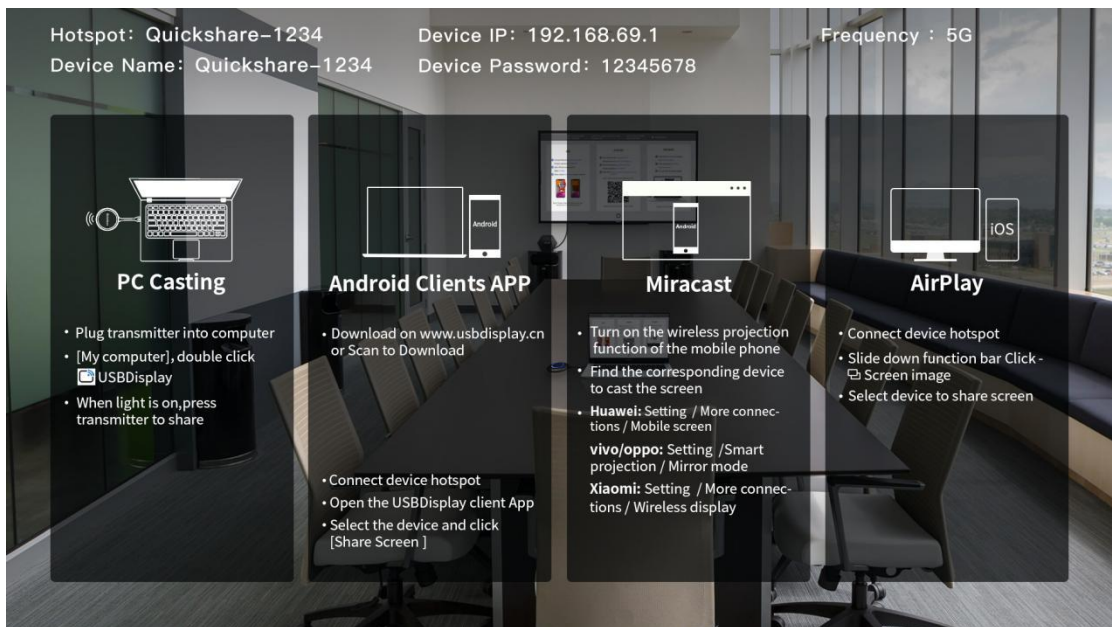


1.Preparation

Open the product box, and please check the following equipment and accessories: host "x1", power adapter "x1", and USB screen transmitter "x1". Use the HDMI cable to connect the HDMI port of the box and the display device, plug in the power adapter, power on, press the power on and off button to turn on, wait 15 seconds and enter the system's standby screen;

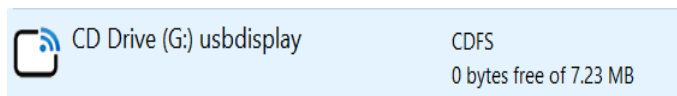
The default resolution of the screen is 1080P, and the main interface is from top to bottom, from left to right: hotspot name, host IP address, hotspot frequency, device name, device password, and screen casting code.

And the bottom of the information bar shows the operation instructions of PC casting , Android client, Miracast, and Airplay.



1、USB Projection

Connect the USB screen transmitter to the USB port of the computer for screen transmission (when the user's computer uses the screen transmitter for the first time, you need to go to the computer's computer - removable storage device - double-click the drive letter CD drive: USBDisplay), then the screen transmission application will automatically run. Please note that Windows 10 systems need to turn off the firewall (Windows Defender). The drive letter is shown in the following figure:



The screen transmitter will start automatically after insertion; the light flashing of




the screen transmitter means that it is starting; wait for about 10s; when the screen transmitter light is always on, the lower right corner of the computer desktop will also display a prompt: press the button to share the screen,as shown in the figure below:

(In some computer systems, due to antivirus software interception,it is not the first time to use, and the screen transmitter does not run automatically .Then you need to execute the launcher program in the USBDisplay drive.)

Press the Button to Share your screen!



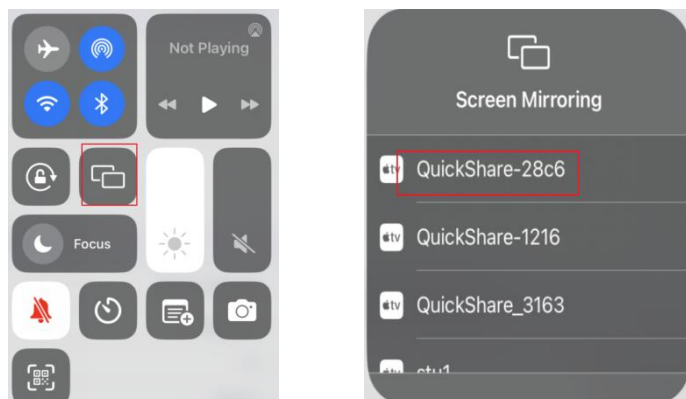
In addition, the status bar in the lower right corner of the computer desktop will display a screen icon . Click the icon with the left mouse button. Selecting the option in the lower left corner, and you can choose the expansion screen, transmit sound, automatic screen projection, mouse acceleration, encoding algorithm.

When the screen transmitter is successfully connected to the box, you can start screen transmission.

2、 Mobile Phone Projection

3.1 iOS transmission

Connect iPhone to the hotspot of the box, then swipe up at the bottom to select screen mirroring, as shown in the picture:



Click Screen Mirroring, and click the corresponding QuickShare_ xxxx option in the pop-up new menu to mirror the screen.

Exit the Airplay mirroring screen, select Screen Mirroring, and click "Stop Mirroring."

(Since mirroring screen requires a stable and clean network environment, it is only recommended to connect to hotspots for screen transmission, and the quality of



transmission under the same network in other methods cannot be effectively guaranteed)

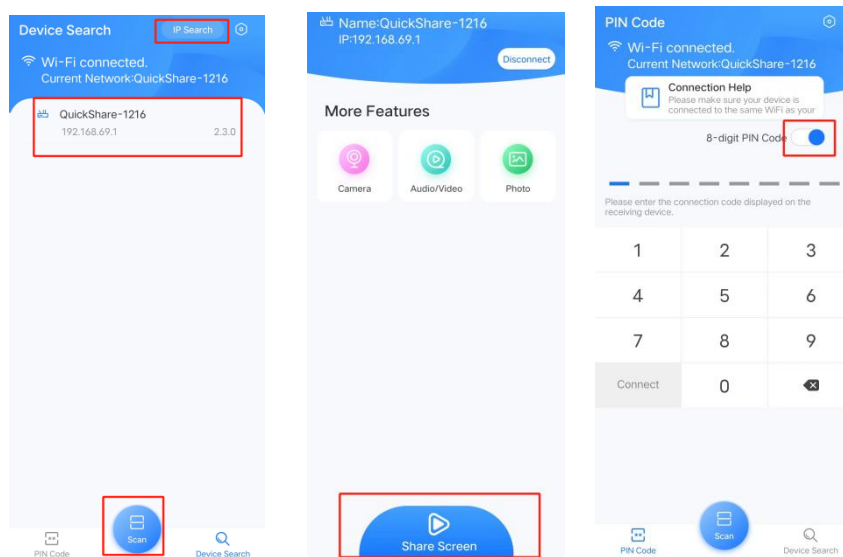
3.2 Android Transmission

3.2.1 APP Transmission

Connect to the Internet, and open the browser to enter the www.usbdisplay.cn web page to download and install the Android client software. After the installation is completed, the mobile phone will appear icon, click this icon, and you can use the Android mobile phone screen. Only support Android system 5.0 or above, if the permissions given after installing the client are insufficient, it will affect the inability of some functions.

Projection Method:

1. Turn on WiFi on the phone, connect to the box hotspot "QuickShare-xxxx," and open the "QuickShare" application; at this time, the QuickShare client will automatically start searching for large-screen devices in the same network. In the list of devices, tap the name of the large-screen device you want to connect to the large-screen device. After connecting, you can push videos, pictures, and music to the big screen. Click Start Mirroring in the picture above to start mirroring the screen, and mobile phones with Android 10 or above can support sound transmission.
2. Click the scan code projection of the Android client, scan the QR code of the main interface, and click Confirm Screen Casting after successful scanning.
3. Click the screen casting code of the Android client, enter the 6-digit/8-digit screen projection code, and click Connect Screen Mirroring.



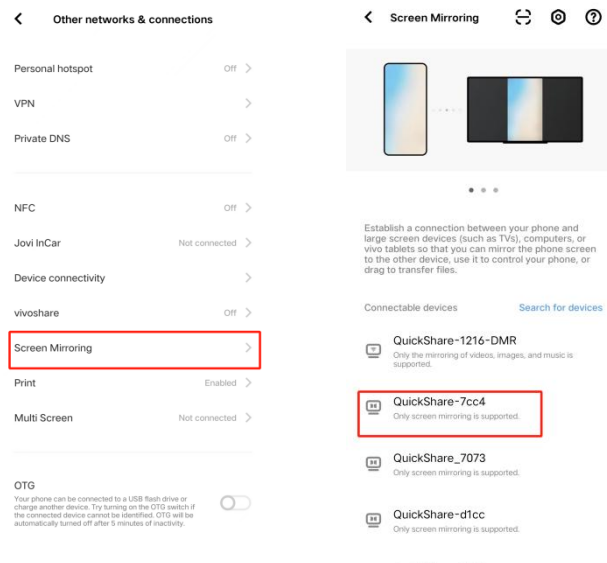
3.2.2 Miracast Transmission



1. Find the mobile phone screen function (or the screen transmission function in other naming methods) in the mobile phone system settings and turn it on. Mobile phones with Android system 5.0 or above support mirrored screen casting. At this time, the mobile phone will automatically start searching for large-screen devices. In the list of devices, tap the name of the large-screen device you want to connect to the large-screen device.

The QuickShare-xxxx corresponding to the connection can mirror the screen.

Exit the cast screen and click "Disconnect."



2. Windows computer comes with wireless screen transmission: use the keyboard shortcut "Win+K" or open the setting page in the lower right corner of the computer, open the projection, click to connect the wireless monitor, enter the search screen projection device page, connect the device you want to project.

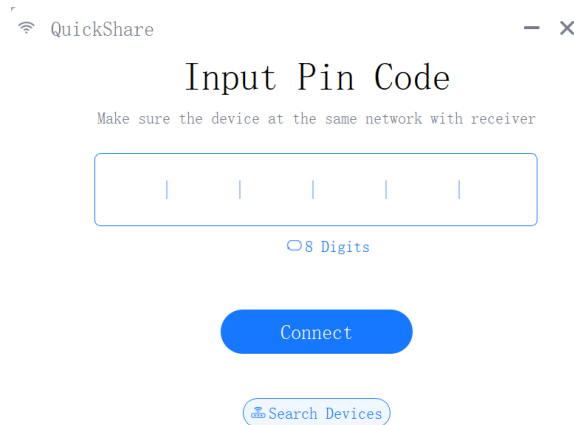
3、Computer Projection

4.1 Windows Client

Open the browser in computer to enter the www.usbdisplay.cn web page to download and install the Windows client software, and you can use the Windows client to cast the screen after downloading and installing. Put the computer and the receiving device in the same LAN or connect to the receiving hotspot and open the Windows client.

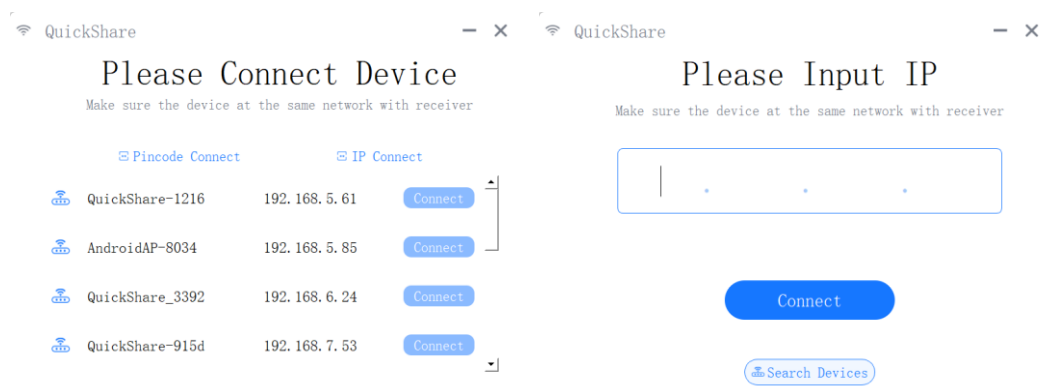
1. Pin Code

You can enter the Pin Code to connect with the receiving end; the computer selects the 6-digit/8-digit Pin Code interface, enters the 6-digit/8-digit Pin Code of the main interface of the receiving end, and click "Connect".



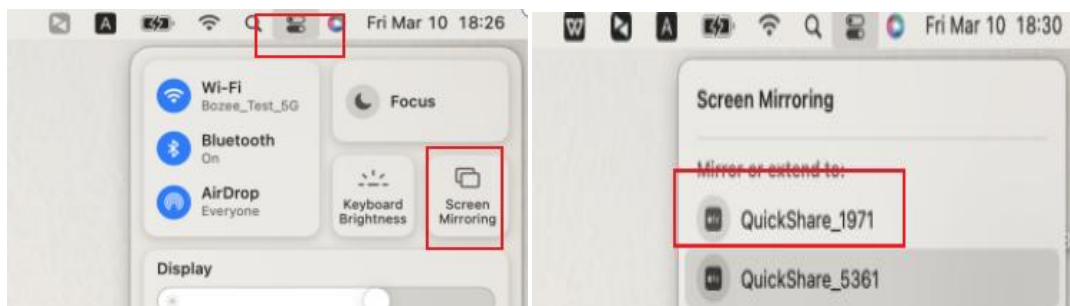
2. Search the Screen

Click "Connect"; the client will automatically search for the receiving end under the same LAN; You can click to the device you want to connect in the device list. Click the "Click Connect" button after the specified receiver to connect and prepare for Pin Code.



4.2 Mac Computer Screen Projection

Put the Mac computer and the receiving device on the same LAN, and click the icon in the upper right corner of the Mac computer, as shown in the figure. Select the "Screen Mirroring" icon that comes with it; you can select the receiving device under the LAN to cast the screen.



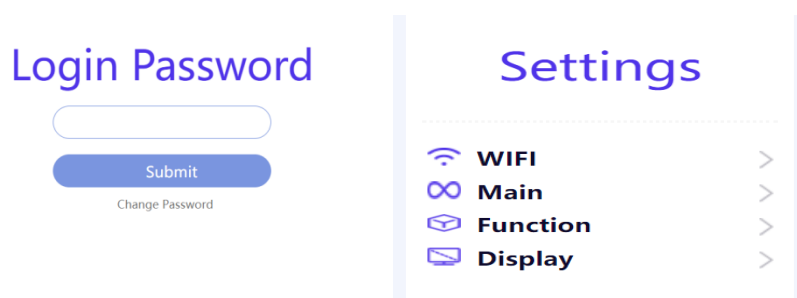
4、Screen Exhibit



The screen of the device can be displayed to the box wirelessly to show. Support the device to grab the screen. Support using mobile phone Miracast to grab the screen , meaning that the screen of other devices can be transmitted to the box, and the existing picture of the box will be down, then, the new screen will be transmitted.

5、Web Background Function

Connect the hotspot in the information bar on the upper right of the box and the hotspot password QuickShare-xxxx/12345678. Then, open a browser, and enter the IP "192.168.69.1". After entering the web page, enter the default password "12345678". You will enter the background settings. As shown in the following figure:



6.1 Basic Settings

6.1.1 Switch languages

Go to the “Background settings”. Click “Basic Settings”. Find the “Language” option. Select Chinese/English. Click “Reboot” to automatically restart the box. After the restart, the language switch is successful.

6.1.2 Set the Frequency band

Go to the “Background settings”. Click “Basic Settings”. Find the “Frequency” band. Select the hotspot band 2.4G/5G, and click “Submit” to save. Then click the “Reboot” button at the top right, and it will take effect when the reboot is completed.

6.1.3 Set the hotspot channel

Go to the “Background settings”. Click “Basic Settings”. Find the “Hotspot Channel” option. Select the “Hotspot Channel”, and click “Submit” to save. Then click the “Reboot” button at the top right, and it will take effect when the reboot is completed.

6.1.4 Set the device password

Go to the “Background settings”. Click “Basic Settings”. Find the “Device PWD” option. Enter a new password, and click “Submit” to save. Then click the



“Reboot” button at the top right, and it will take effect when the reboot is completed.

6.1.5 Set the hotspot name

Go to the “Background settings” . Click “Basic Settings” .Find the “Hotspot Name” option.Enter the new hotspot name, and click “Submit” to save. Then click the “Reboot” button at the top right, and it will take effect when the reboot is completed.

6.1.6 IP setting

Go to the “Background settings” . Click “Basic Settings” .Find the “IP Setting” option .Select “Static”. Enter a valid IP address.Click “Submit”, and the main interface IP will automatically display the static IP of the setting; If you click “DHCP”, it switches to a dynamic IP. After setting the wired static IP, you need to enter the configured IP address on the browser when you enter the background settings.

6.1.7 Recovery

1. Go to the “Background settings” . Click “Basic Settings” .Find the”Recovery” option and you will see “Factory Default”.Click”Submit” to save, and immediately restore the setting; The factory setting will be successful after the box is rebooted.

2. Press and hold the “Reset” button of the box when it is powered on, and the box will automatically restore the factory settings after about 10 seconds; The factory setting will be successful after the box is rebooted.

6.2 Function settings

6.2.1 Windows Mode

Go to the “Background settings” .Click the “Function Settings”. Find the “Dual Screen”.Select the Single /Dual/Quad/Exclusive mode, and click “Submit”; the box will automatically reboot, and it will take effect after rebooting; If you select exclusive mode, when one device is screened, other devices cannot grab the screen.

6.2.2 Screen Scale

Go to the “Background settings” .Click the “Function Settings”.Find the “Screen Scale”option.Select Keep The Aspect Ratio/Stretch Display, and click”Submit”; Airplay screen projection will take effect (only support in dual screen, This option in single screen mode is hidden).

6.2.3 Media Path (USB Flash Drive Playback)

Create a “Media” folder under the root directory of the U disk (FAT32 format),



and put the required audio, video and pictures into this folder(currently only support playing audio, video, and pictures) ; Then put the U disk connect to the USB port of the box. When the box is connected to the display end but there is no projection, the U disk will automatically play audio, video, and pictures.

6.2.4 Wallpaper Upload/ Choose Wallpaper

1. Go to the “Background settings”. Click the “Function Settings”. Find the “Wallpaper Upload” option. Click to “Select Wallpaper”. Then select the wallpaper with a resolution of 1920*1080 (horizontal/vertical screen) to upload; and the size is controlled within 500KB. Select the local picture, and click “Submit”.

2. Find “Choose wallpaper” option in the background function settings. Select “Customized wallpaper”. Click “Submit”, and select “Reboot” in the upper right corner. The wallpaper display takes effect after rebooting; Select “Original Wallpaper”. Click “Submit”, and select “Reboot” in the upper right corner to restore the original wallpaper.

6.2.5 Password Display

Go to the “Background settings”. Click the “Function Settings”. Find the “Password Display” option , and select show password/ hide password. Select “Hide Password”. Click “Submit”, and click the “Reboot” button at the top right; After the box reboots, the hotspot password on the main interface will be hidden and displayed as “*****”.

6.2.6 6-bit/8-digit Pin code settings

Go to the “Background settings”. Click the “Function Settings”. Select “Projection Code” option. Choose to display the 6-digit/8-digit Pin code. Click “Submit”, and then, click the “Reboot” button at the top right. After rebooting, the box screen displays a random 6-digit/8-digit Pin code. You can start casting the screen through the 6-digit/8-digit Pin code (The default is to turn off the Pin code).

6.2.7 Help Page

Go to the “Background settings”. Click the “Function Settings”. Find the “Help Page”. Select the “Hide” button, and click “Submit”. Click the “Reboot” button at the top right, and the help page will be hidden after rebooting.

6.2.8 Miracast Pin Code

Go to the “Background settings”. Click the “Function Settings”. Select the



“Miracast Pin Code”.Click to open Pin code, and click “Submit”. Click the “Reboot” button in the upper right corner. When using Miracast casting, the Pin code for connection will be automatically displayed in the upper right corner of the main interface. And the mobile phone or computer can enter the Pin code to connect, and you can cast the screen;

6.2.9 Miracast Channel

Go to the “ Background settings”. Click the “ Function Settings”.Select the “Miracast Channel” option.Select the suitable channel, and click “Submit”.Click the “Reboot” button in the upper right corner, and it will take effect after the reboot is completed.

6.2.10 Miracast UIBC

Go to the “ Background settings” . Click the “ Function Settings” . Select “Miracast UIBC”(Miracast reverse control) . Click “Enable”, and click “Submit”. Then,click the “Reboot” button in the upper right corner. Turn on the Miracast UIBC, Miracast screen projection by computer or mobile phone;When the box is connected to the touch device and the display device will be controlled.(At present, only some Huawei /Honor mobile phones support Miracast reverse control).

6.2.11 OTA Update

Go to the “ Background settings” . Click the “ Function Settings” . Click “Select File”, and select the background upgrade file, and click “Submit”; After the upload is successful, the upgrade screen will appear on the receiving end. The receiving end will automatically restart after the upgrade is successful, and the upgrade is successful after the restart.

6.2.12 Airplay Mode

Go to the “ Background settings” . Click the “ Function Settings” .Find the “Airplay Mode” option, and select the Mirror Mode/Push Video URL Mode.Click”Submit”, and click the “Reboot” button in the upper right corner. If you select the mirror mode, for example, when playing Tencent Video, the video is displayed as a mirror. If you select the push video URL mode, when you play Tencent Video, the video is pushed and played. Supported only in a single screen (option hidden under the double screen).

6.2.13 Remote Control

Go to the “ Background settings” . Click the “ Function Settings” . Select the “Remote



Control” option. Click “turn on”, and click “Submit”. Click the “Reboot” button in the upper right corner; After rebooting, the box will automatically connect to the remote control.

6.3 Display settings

6.3.1 Screen Proportion

Go to the “Background settings” . Click the “Display Settings” . Find the Zoom HDMI option; and the default 100 is the full screen; after you enter the number (60~100 is the best), click “Submit” to save and take effect immediately.

6.3.2 Screen Rotation

Go to the “Background settings” . Click the “Display Settings” . Find “Screen Rotation” option, you can choose Landscape / Vertical- 90 / Vertical-270; After selecting the screen state, click “Submit” . The box will automatically restart. It will take effect after the restart is complete.

6.3.3 Airplay Resolution

Go to the “Background settings”. Click the “Display Settings”. Find the “Airplay” option and you will see “Airplay Resolution”. Then select the Airplay resolution, and click “Submit” to save. Then click the “Reboot” button at the top right, and it will take effect when the restart is completed.

6.3.4 HDMI Signal

Go to the “Background settings”. Click the “Display Settings”. Select HDMI Signal” option. Click “turn on”. Click “Submit”, and click the “Reboot” button in the upper right corner. When the HDMI signal source is turned on, the box has a screen display output; When turned off , the box has no screen display output. (Note: When the HDMI signal source is turned off, when the device is projected, the receiving end will be displayed.)

6.3.5 HDMI Resolution

Go to the “Background settings”. Click the “Display Settings”. Find the “HDMI Resolution” option. Select the resolution you need to adjust, and click “Submit” to save.

6.3.6 Miracast mode

Go to the “Background settings”. Click the “Display Settings”. And find the “Miracast display” mode; you can select the default mode or the height full mode, click



“Submit”, and the box is successfully set after restarting. If the default mode is selected, the Miracast landscape state of the mobile phone is full screen in the dual-screen mode. And in the height full mode, the mobile phone Miracast is full screen in the vertical screen state of the dual-screen mobile phone (only supports taking effect in the dual screen, and the option is hidden under the single screen).

6、 Common problems handling

7.1 USB screen transmission problem

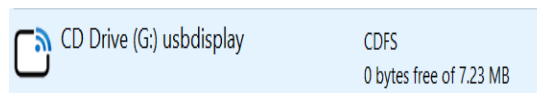
7.1.1 The computer plugged into the USB screen transmitter does not respond

When the computer is connected to the USB screen transmitter, the computer screen does not appear as shown below:

Press the Button to Share your screen!

Share

You need to go to "My Computer" to find the drive letter of USBDisplay, double-click the drive letter, and the screen application will run automatically. It should be noted that Windows 10 systems need to turn off the firewall (Windows Defender). The drive letter is shown in the following figure:



If double-clicking the drive letter is invalid, right-click to enter the drive letter, and then double-click to run the Launcher application.

7.1.2 USB screen prompts "Connect to the wireless network"

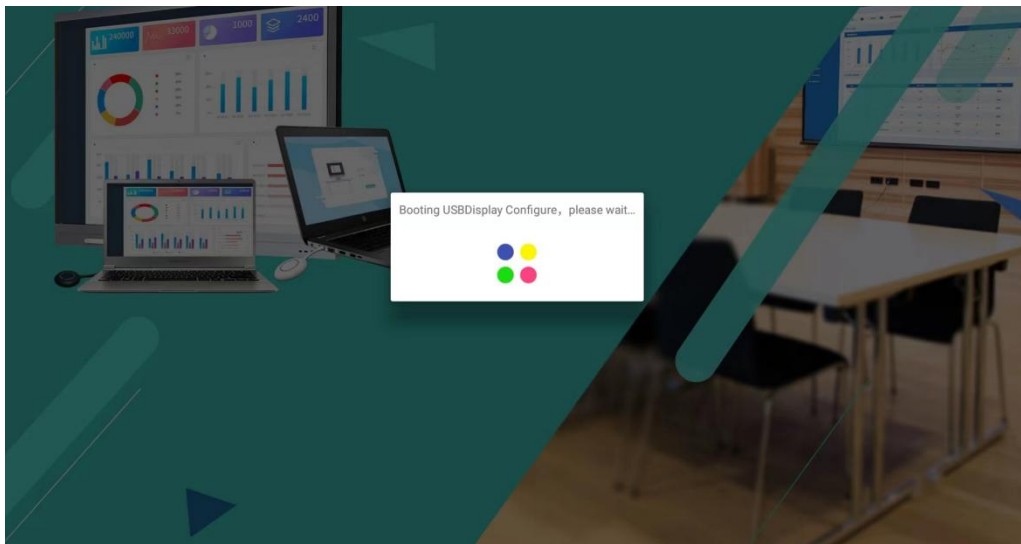
The computer is connected to the USB screen transmitter, and the computer screen appears in the following interface; please check whether the USB screen transmitter has been paired with the box; if the box backup has reset or changed the hotspot name and password, you need to re-pair to transfer the screen.



Creating AV Channel!

7.1.3 USB screen transmitter pairing

1. You can use the USB screen transmitter to access any USB port of the box for pairing, wait for a few seconds, and pay attention not to unplug the USB screen transmitter during the pairing process.

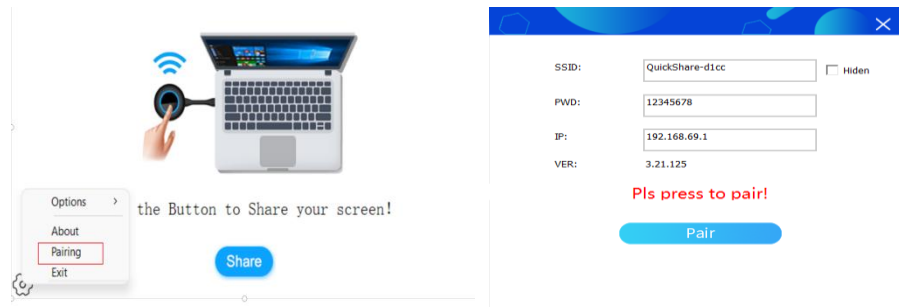


After the pairing is completed, connect the USB screen transmitter to the computer USB port to transfer the screen.

2. The screen transmitter is connected to the USB port of the computer; Click the setting in the lower left corner of the screen transmitter running interface, and open the pairing interface. Enter the hotspot name, hotspot IP, and hotspot password of the box, and click "Pair USB Screen Transmitter" to pair after entering.

If pairing fails, check whether the pairing information entered is incorrect.

As shown in the following figure:



After successful pairing, the screen transmitter will automatically re-run, as shown in the figure below; click Cast to start screen transfer.



7.2 Mobile phone transmission problem

7.2.1 Android phones can't search for hotspots

If WIFI cannot search for the receiving host hotspot, please check whether the mobile phone you are using supports 5G WIFI (if the current mobile phone does not support 5G WIFI, you can set the hotspot of the receiving host to 2.4G mode, but don't recommended to use wireless screen transmission under the 2.4G network).



7.2.2 Android phones can't search for devices

When QuickShare app in the Android phone can't search for the host device:

Please check if the mobile phone WIFI is connected to the host's hotspot and not other networks.

7.2.3 Apple phones can't cast screens



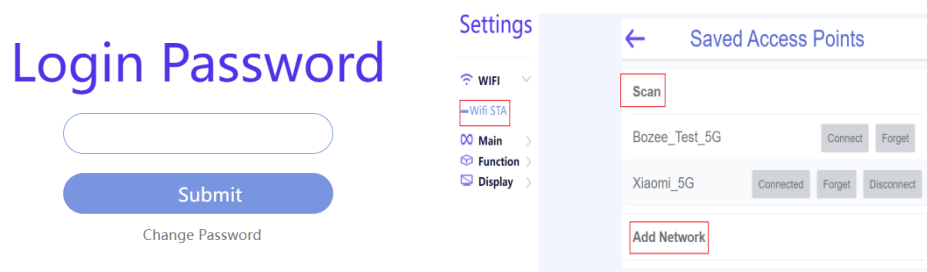
When the iOS mobile phone's AirPlay cannot cast the screen when mirroring, please check whether the mobile phone is a system above 9.0; if the system is lower than 9.0, please upgrade the mobile phone system before transmitting the screen.

7.3 Connect to a wired network

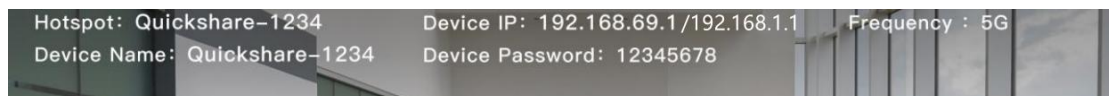
You can choose to connect to a wired network to cast a screen to make the network speed of the hotspot more stable.

7.4 Connect to a wireless network

Connect to the hotspot and hotspot password "QuickShare-xxxx/12345678" in the information bar at the top right of the box, open a browser, enter the IP "192.168.69.1", enter the login password after entering the web page, and the default is "12345678". As shown in the following figure:

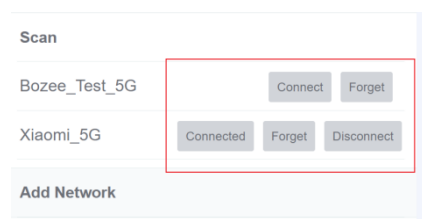


As shown in the image above, click WiFi Settings, click Scan Wifi, click the network you need to connect to, enter the network password, and click Connect; Or click Add a network, enter the name of the network you want to connect to, enter the network password, and click Submit when you are done. The box is automatically networked. As shown in the following figure:



7.5 Disconnect from the wireless network

To disconnect from the wireless network. As shown in the figure below, enter the web background web page, and click WiFi Settings, click Forget or Disconnect to disconnect the network.





7.6 Change the login password for the web background

Connect to the hotspot and hotspot password "QuickShare-xxxx/12345678" in the information bar at the top right of the box, open the mobile browser, enter the IP "192.168.69.1", enter the web page, enter the original password "12345678" in the input box below the change password, click submit, enter the new password in the input box below the new password, click submit to modify successfully.

Login Password

Submit

Change Password

Tips

Old Password:

New Password:

Cancel

Submit

If you forget the login password, enter "Quickshare" in the input box under the change password, click submit, enter the new password in the input box below the new password, and click submit to modify successfully.