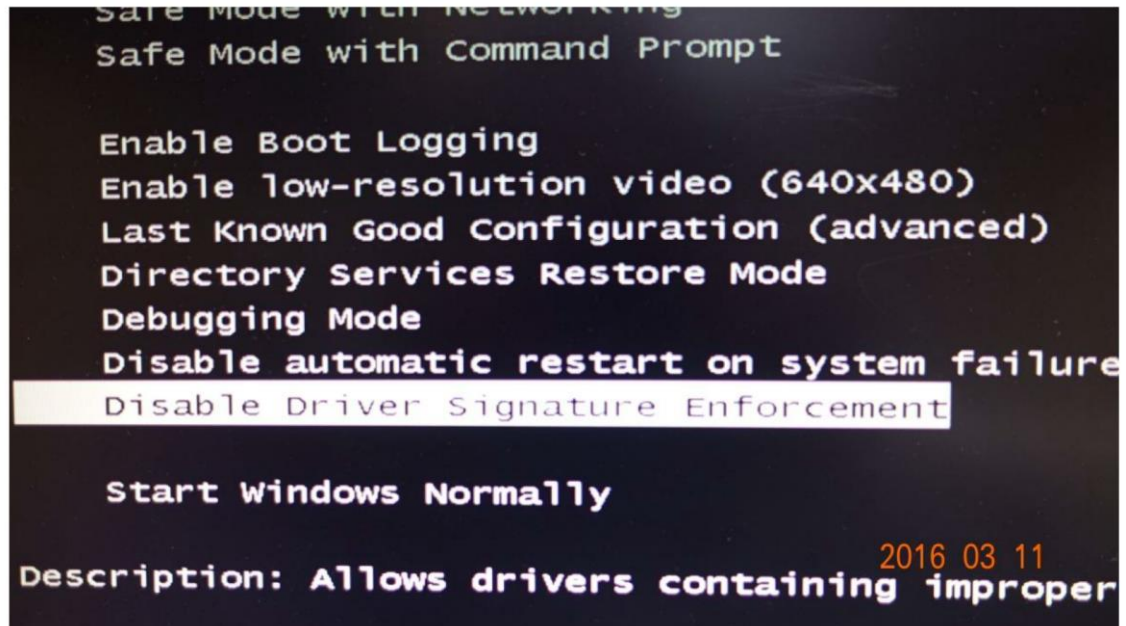


SOP of updating projector F/W

Install USB driver

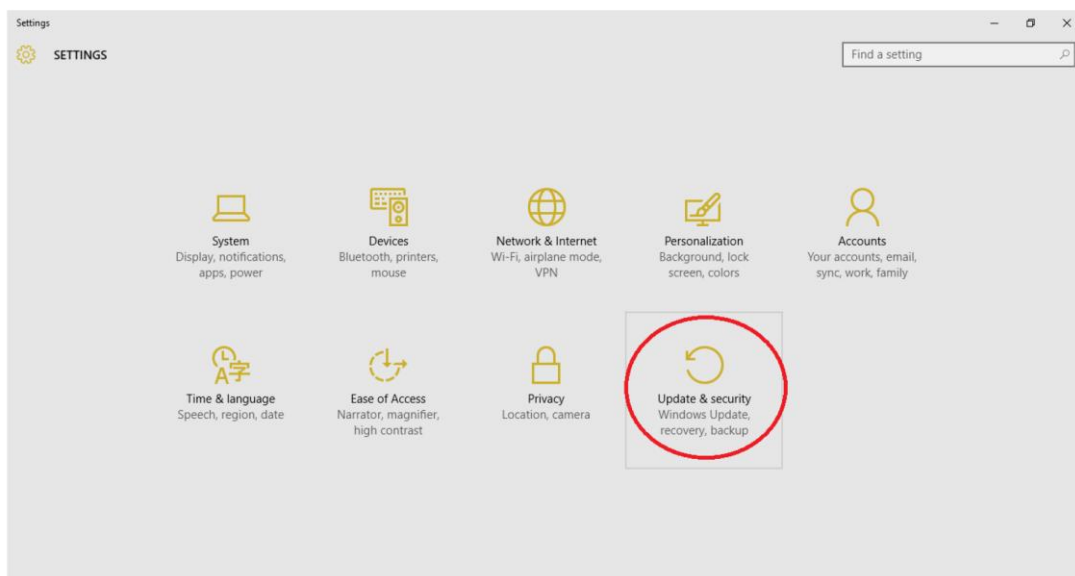
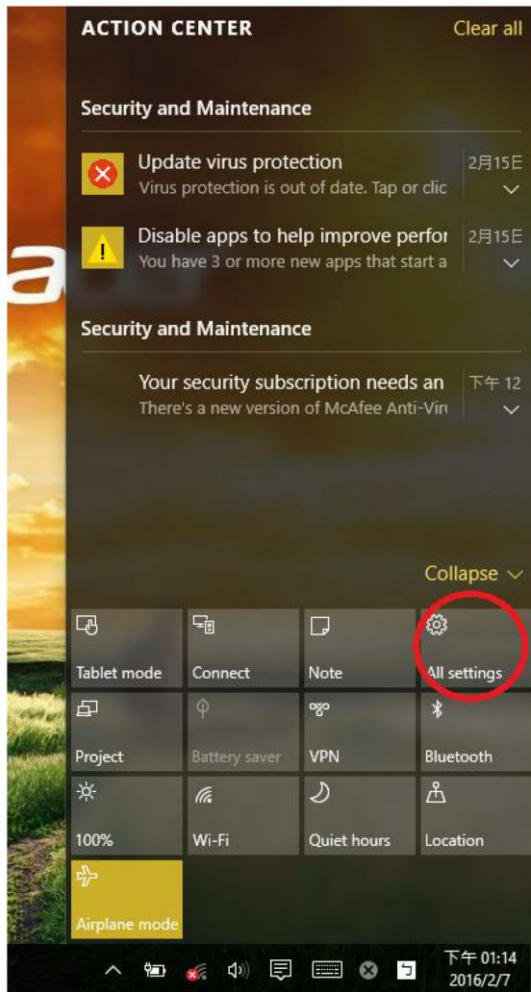
Windows 7 x64

1. Reboot PC
2. Keep pressing F8 to get in the Advanced Boot Option page
3. Select the “Advanced Boot Options” to choose “Disable Driver Signature Enforcement”.

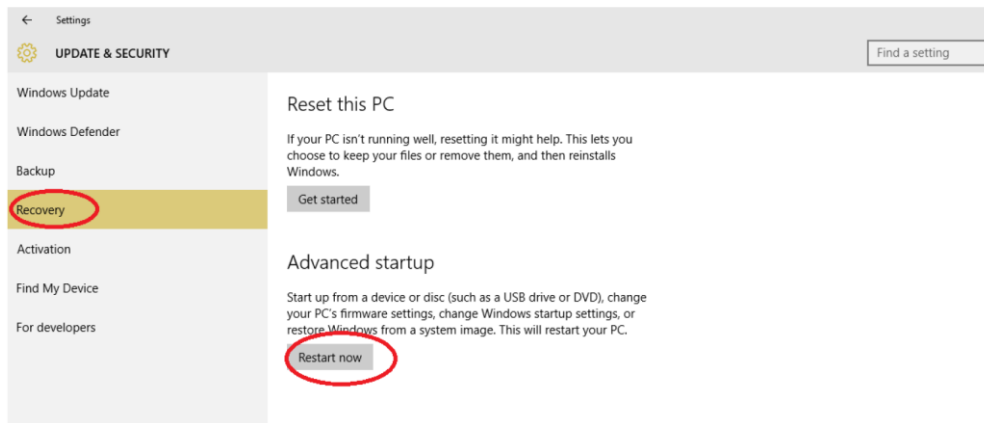


Windows 10 X64

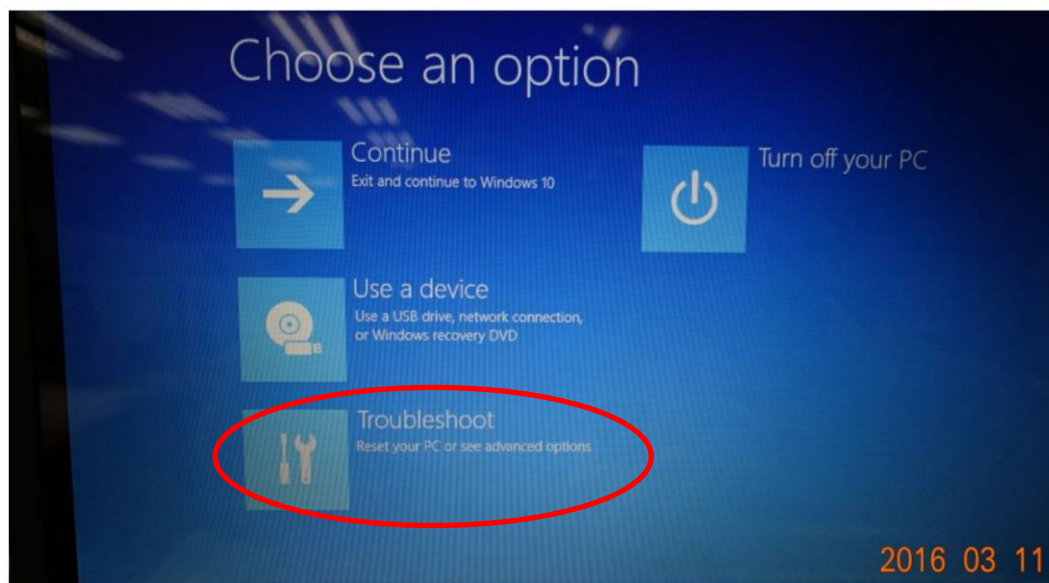
1. Select [Settings] and [Update&security]



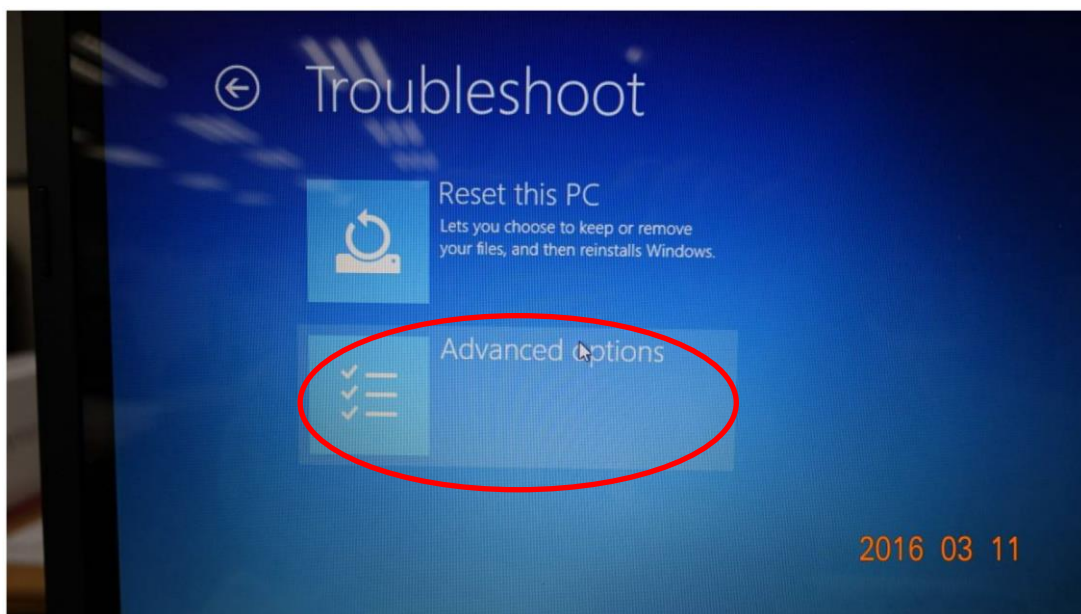
2. Click [Restart now] from Recovery



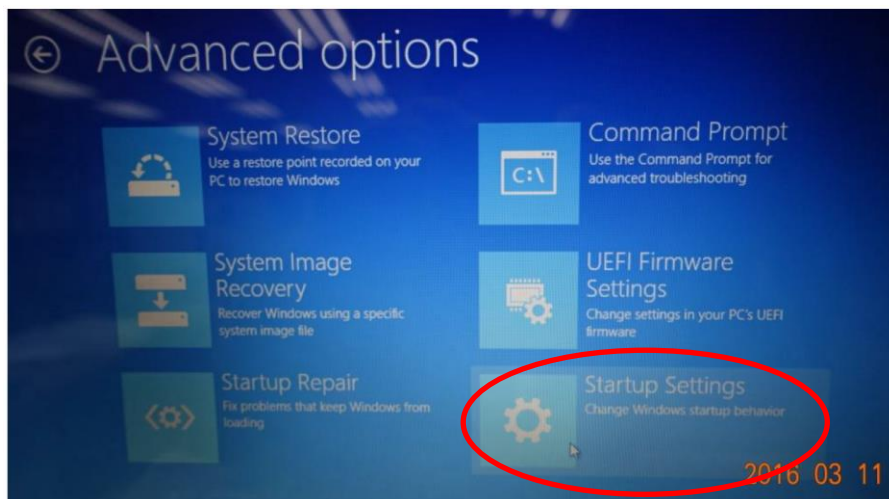
3. Click [Troubleshoot]



4. Click [Advanced Options]



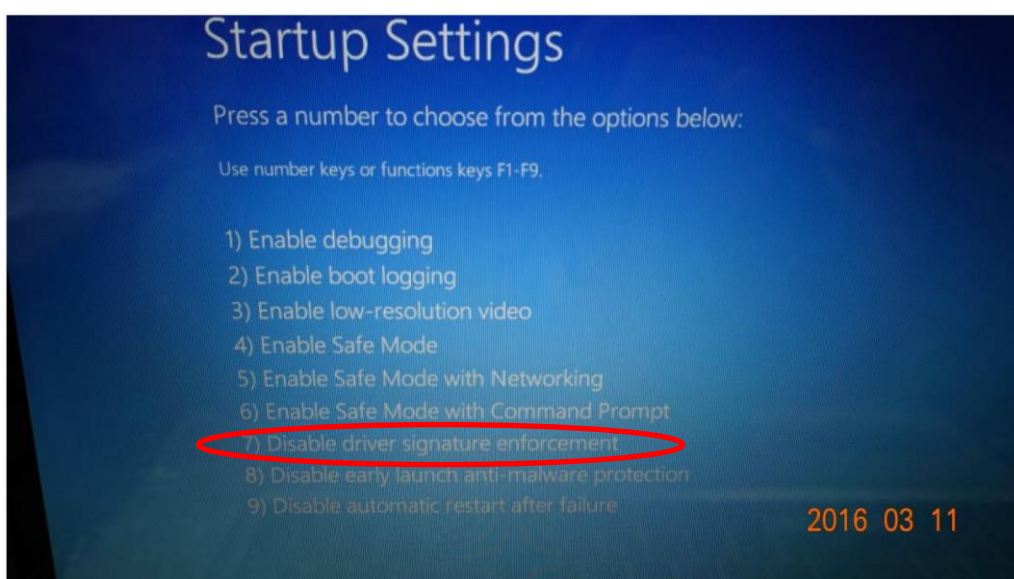
5. Click [Startup Settings]



6. Click [Restart]

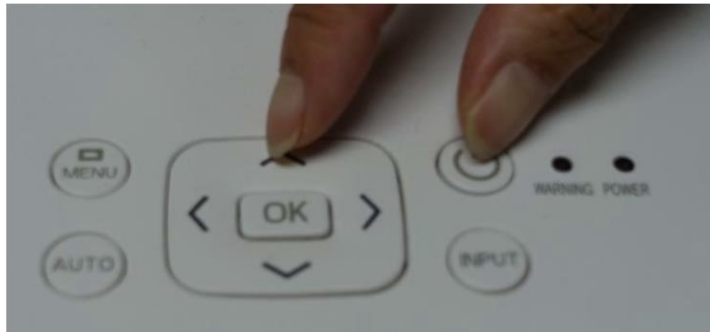


7. Press [F7] to choice "Disable driver signature enforcement"



□ **Setup projector in F/W downloading mode**

1. Press [Power] + [UP] simultaneously



2. Plug-in power code



3. Keep press [power + up] button until warning LED in steady light and power LED in flashing light.



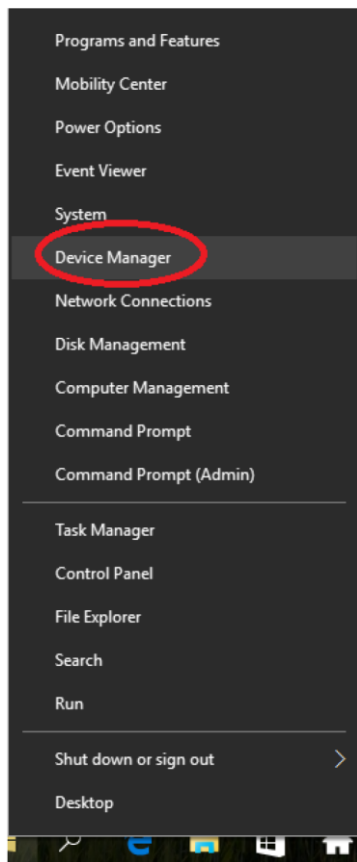
4. Connect a USB Type A – B cable to desktop/laptop



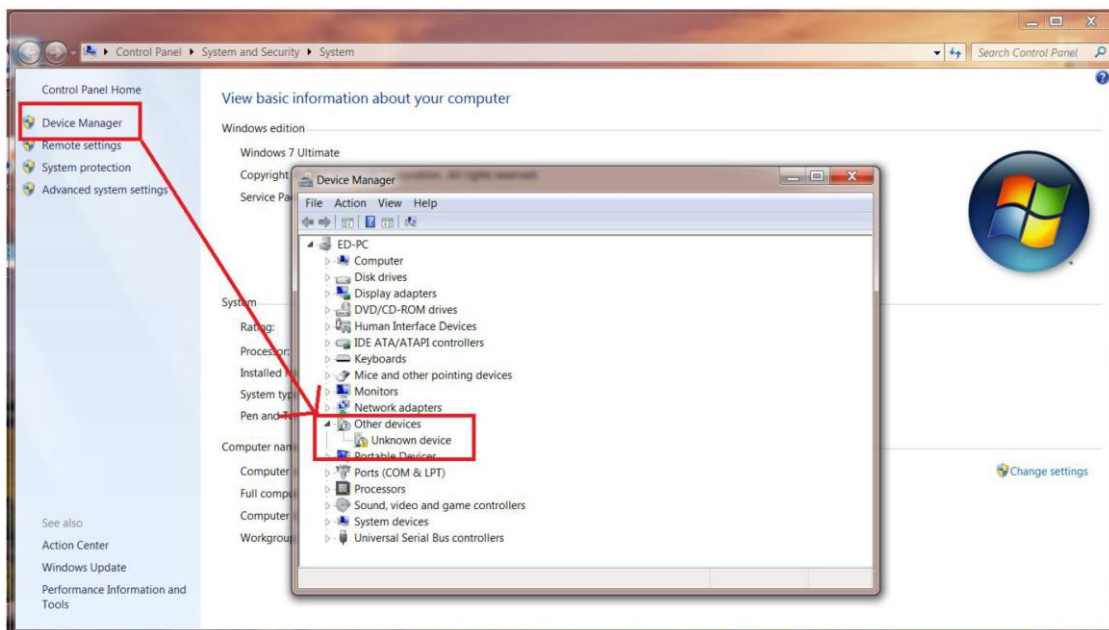
5. Open [Device Manager]

Depending on the OS setting, there may be difference in view or how to start.

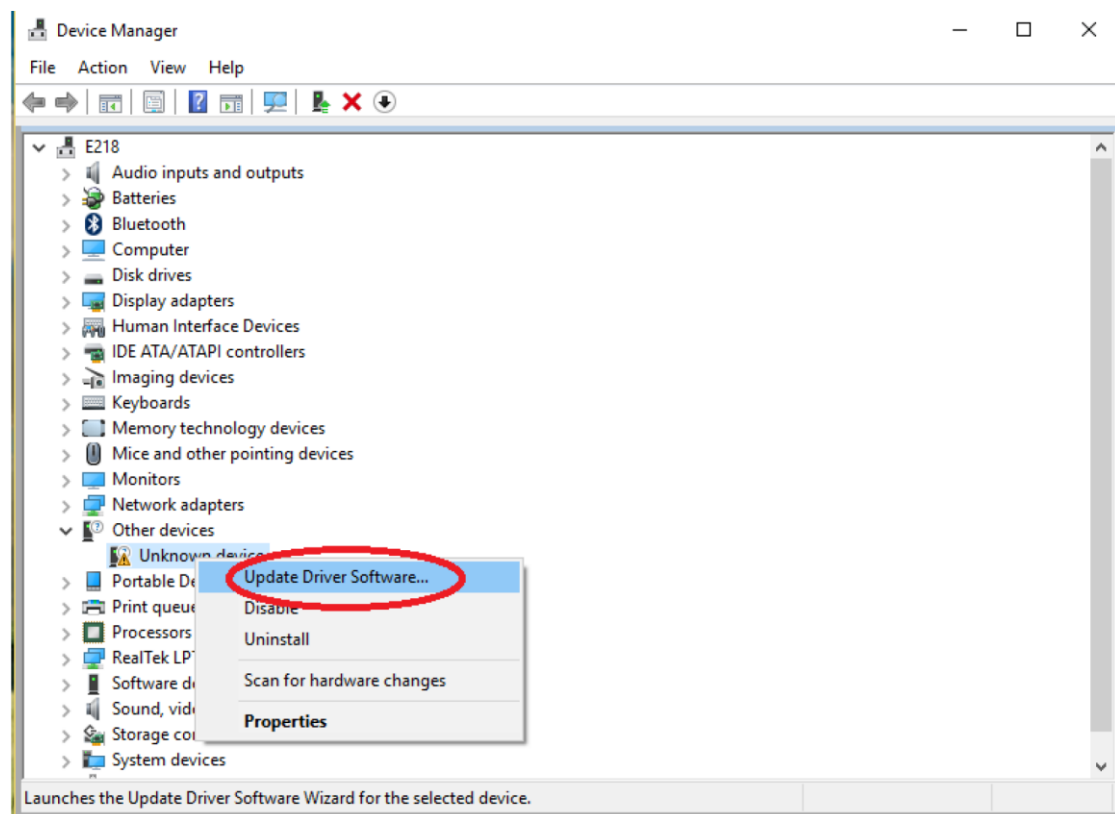
Windows 10



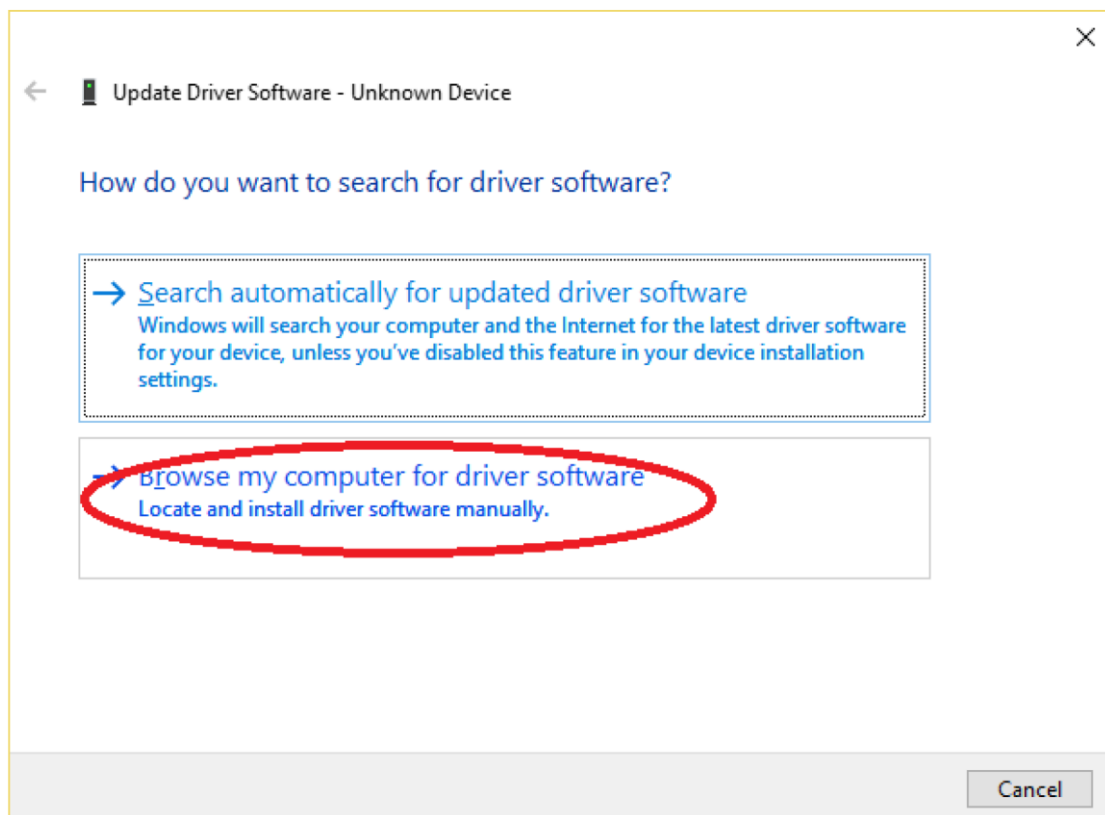
Windows 7



6. Update Driver Software from right click of mouse



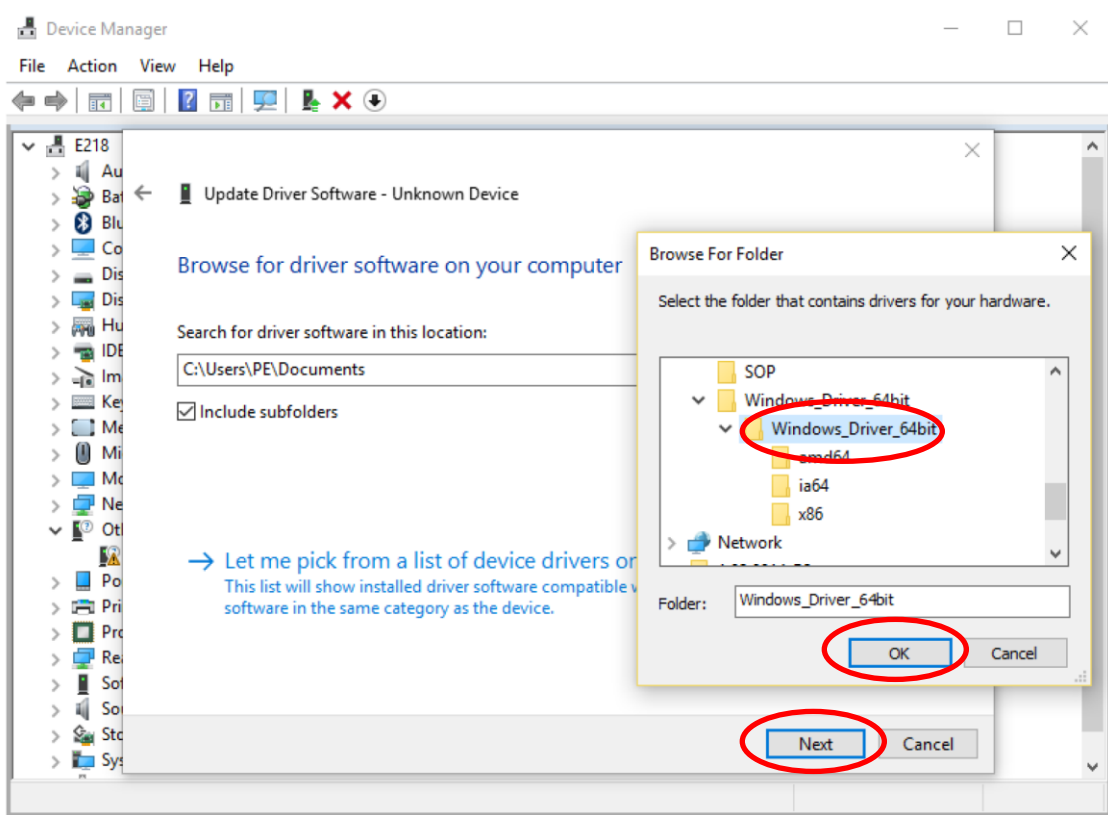
7. Select [Browse my computer for driver software]



8. Browse for driver software on your computer

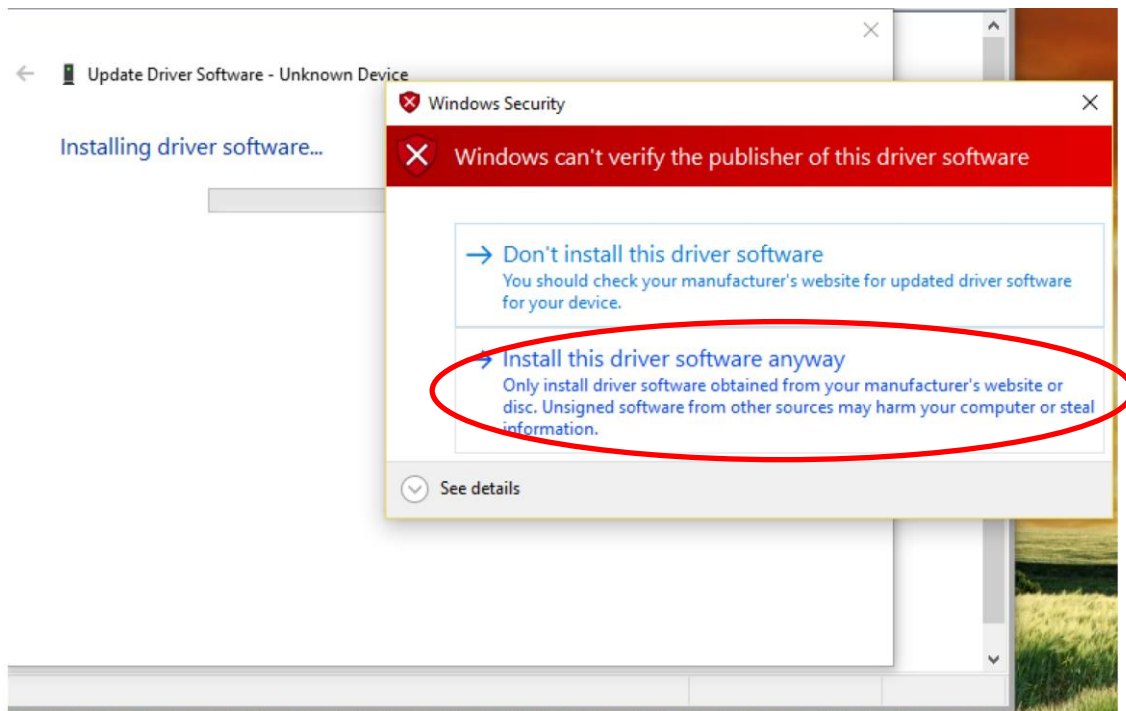
Please select the path: "...¥Windows_Driver_64bit" that we have provided.

Click [Next]

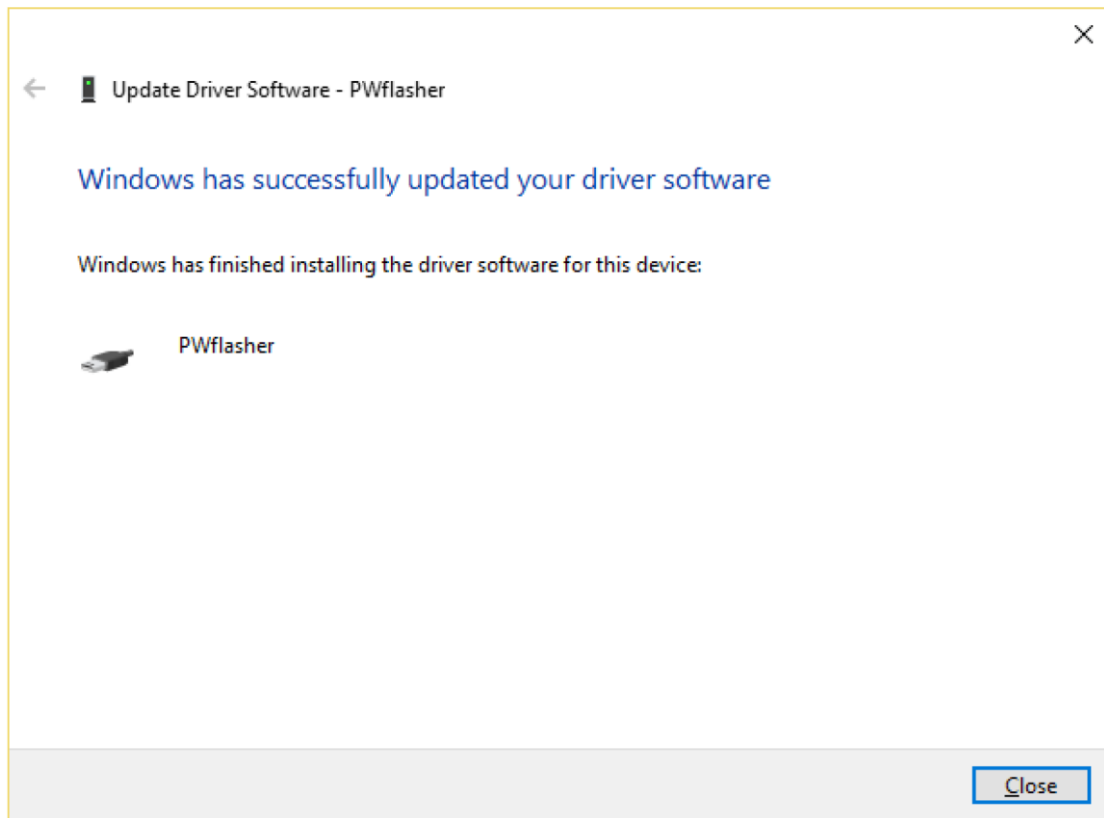


9. It should popup warning messages.

Click "Install this driver software anyway"



10. Install successfully.



This driver installation only needs to do once for each desktop/laptop