

SOP for Updating FW V1.00_1036 for EK-350U

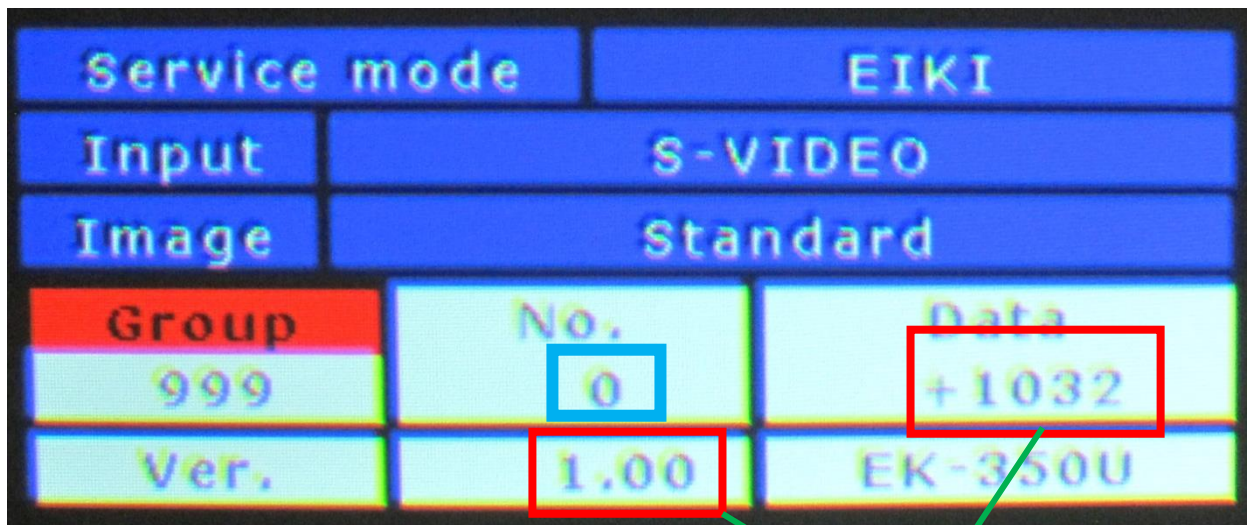
Procedure

1. Check the original FW version of the projector
2. Install USB driver to PC
(once required for each PC)
3. Updating FW V1.00_1036 to projector
4. Initializing the projector

1. Check the original FW version of the projector

Main FW Version check

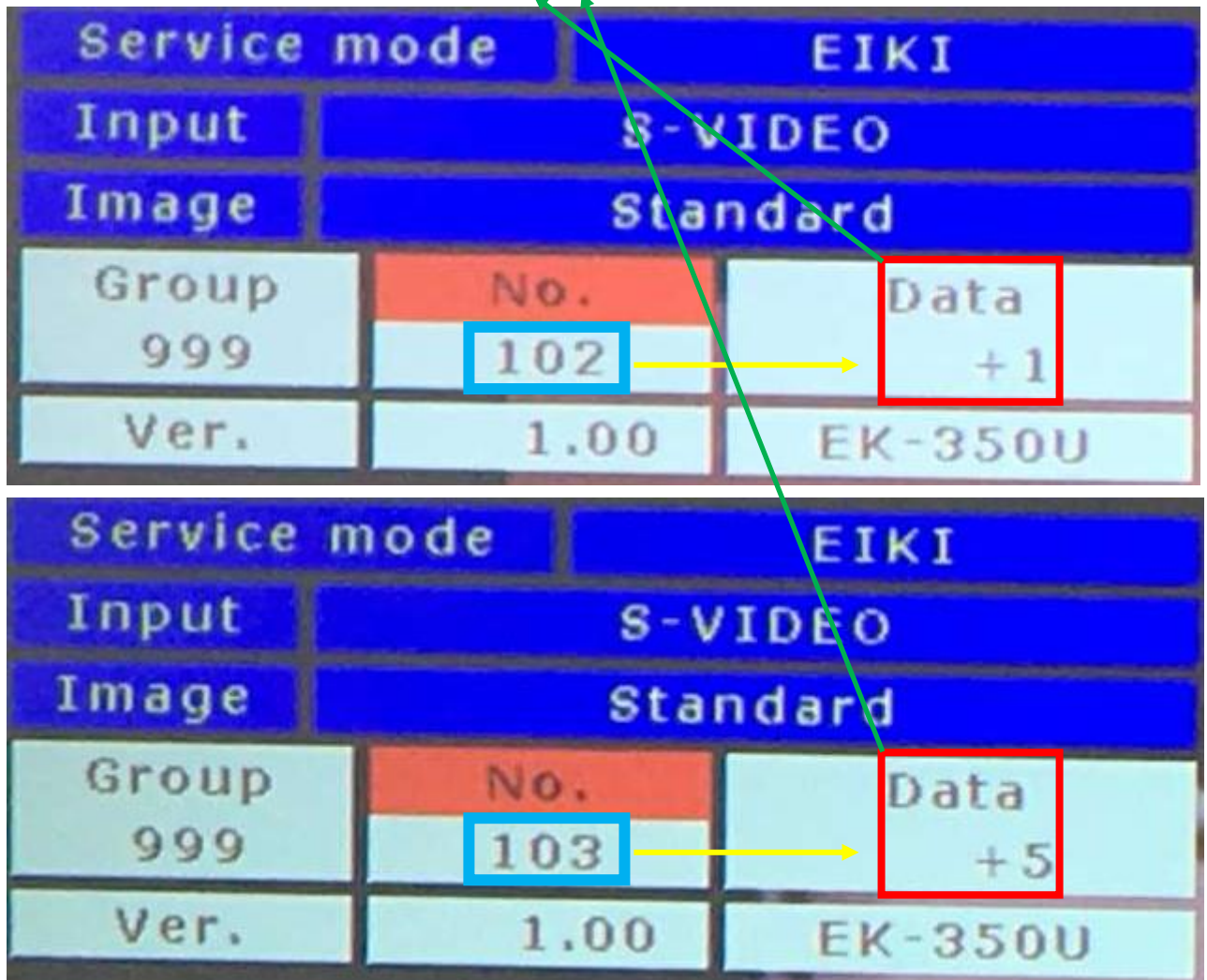
1. Please wait to Power LED in steady light Green
2. Press [Menu]+[Right] simultaneously more than 5 Seconds to Show Service menu For FW Version.



3. If shown as above picture, Main FW Version is [V1.00_1032]
Please write it down in your notes.

Sub CPU FW Version check

4. Press [Menu] to select "No." and Press [Up] or [Down] to select No. "102".
Check Data (In below picture, it is "+1")
5. Press [Menu] to select "No." and Press [Up] or [Down] to select No. "103".
Check Data (In below picture, it is "+5")
5. Sub-CPU FW Version is "102"+"103".
If shown as below picture, it is [V1.05]

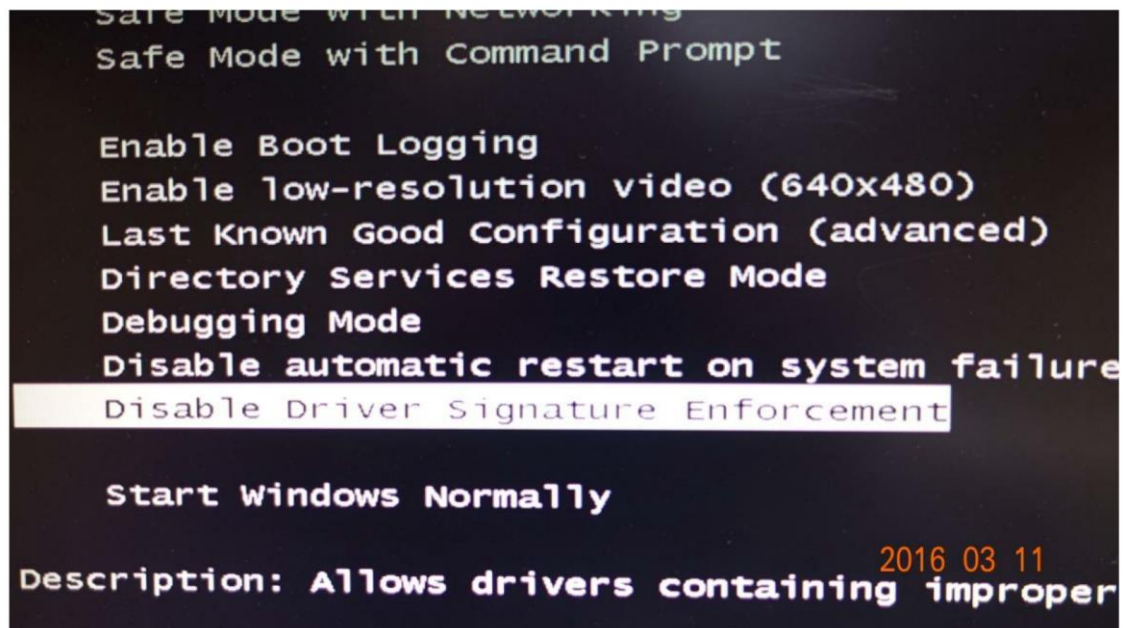


End.

2. Install USB driver to PC

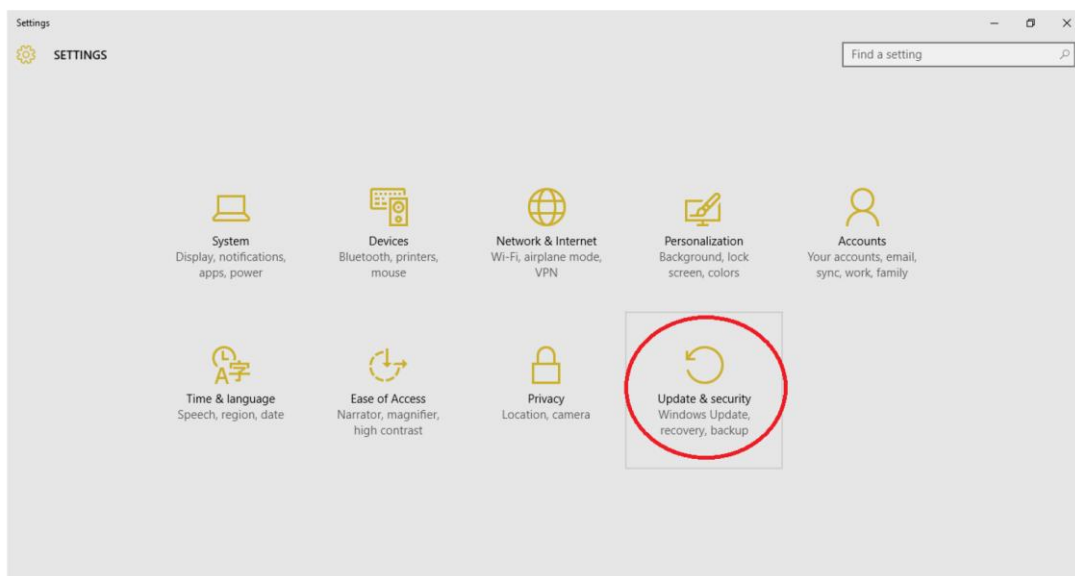
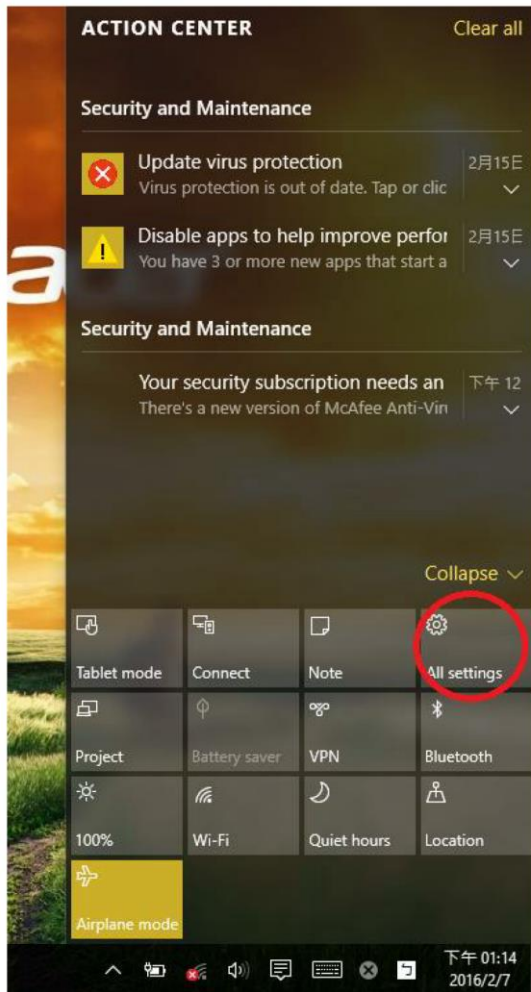
Windows 7 x64

1. Reboot PC
2. Keep pressing F8 to get in the Advanced Boot Option page
3. Select the “Advanced Boot Options” to choose “Disable Driver Signature Enforcement”.

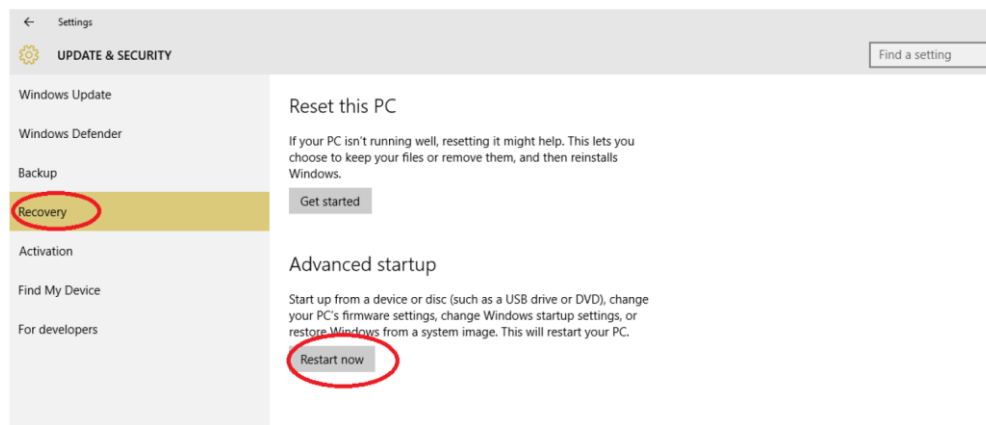


Windows 10 X64

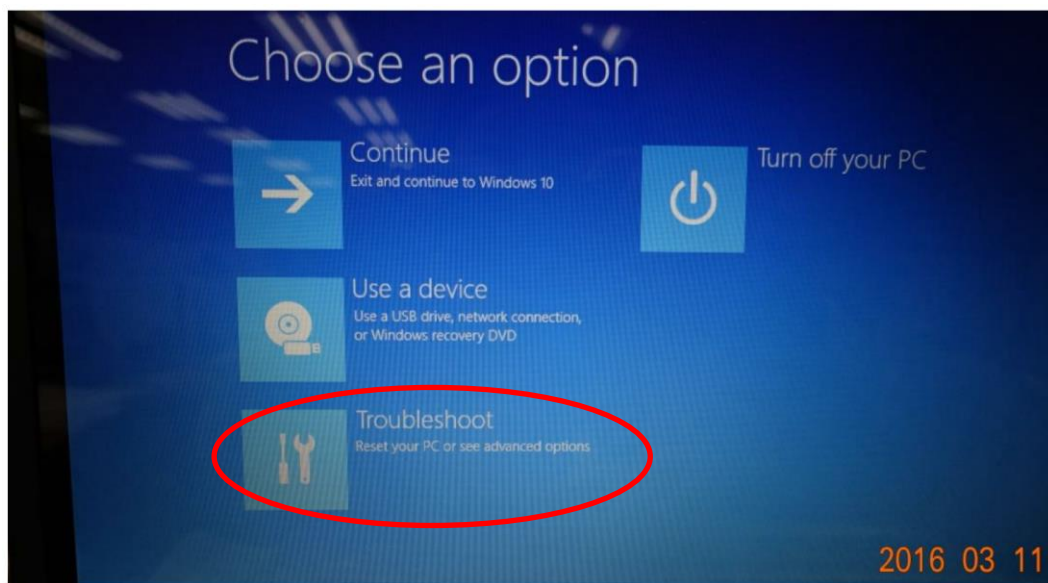
1. Select [Settings] and [Update&security]



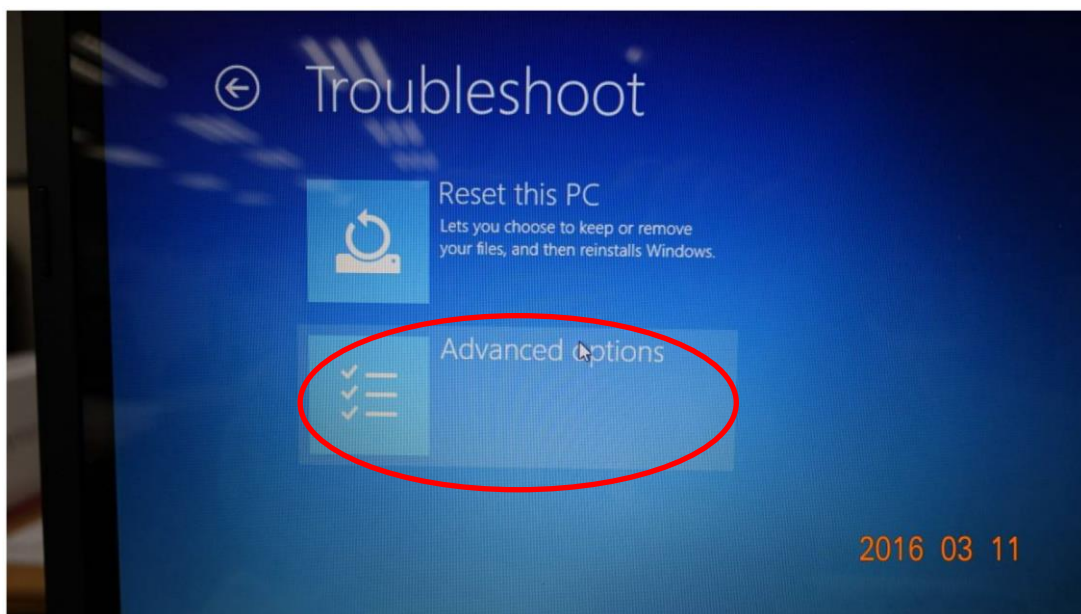
2. Click [Restart now] from Recovery



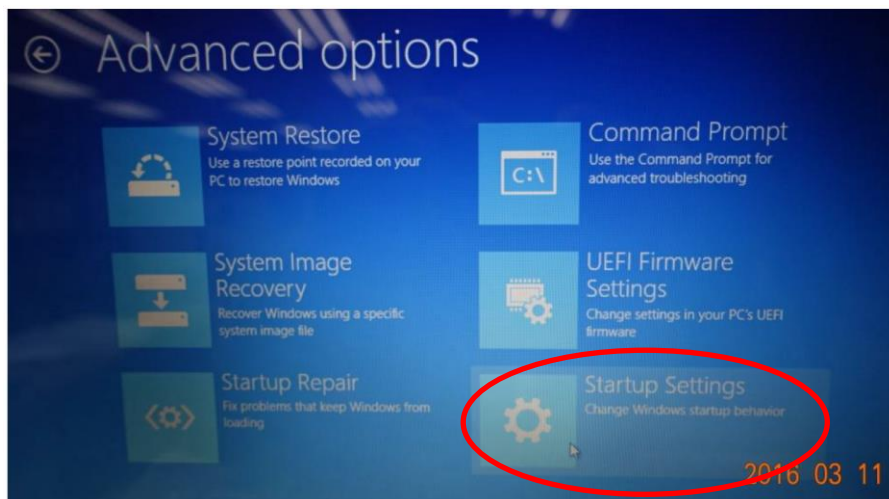
3. Click [Troubleshoot]



4. Click [Advanced Options]



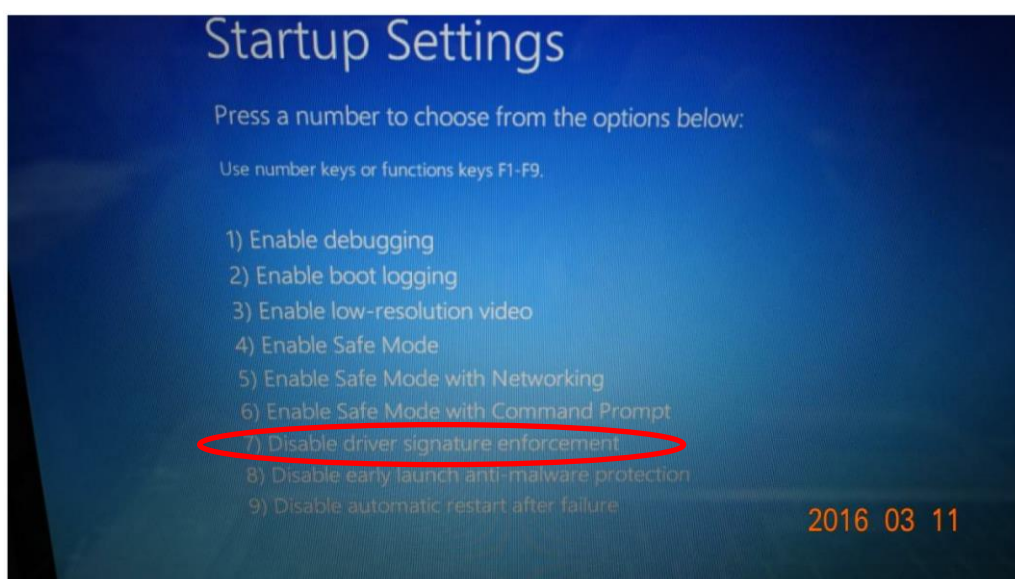
5. Click [Startup Settings]



6. Click [Restart]



7. Press [F7] to choice “Disable driver signature enforcement”



□ **Setup projector in F/W downloading mode**

1. Press [Power] + [UP] simultaneously

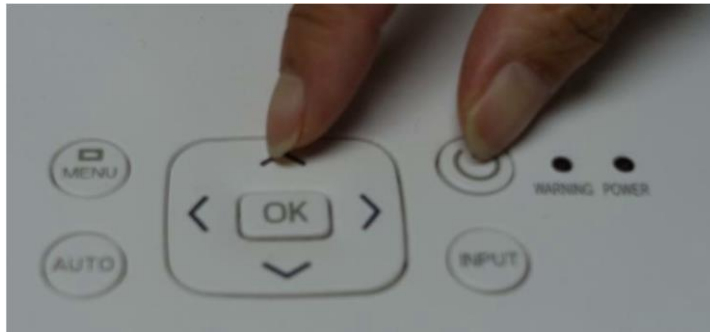


Image is different
from EK-350U

2. Plug-in power code



Image is different
from EK-350U

3. Keep press [power + up] button until warning LED in steady light and power LED in flashing light. (For EK-350U, until power LED is flashing light or steady light)



Image is different
from EK-350U

4. Connect a USB Type A – B cable to desktop/laptop (For EK-350U, USB-A micro USB cable)

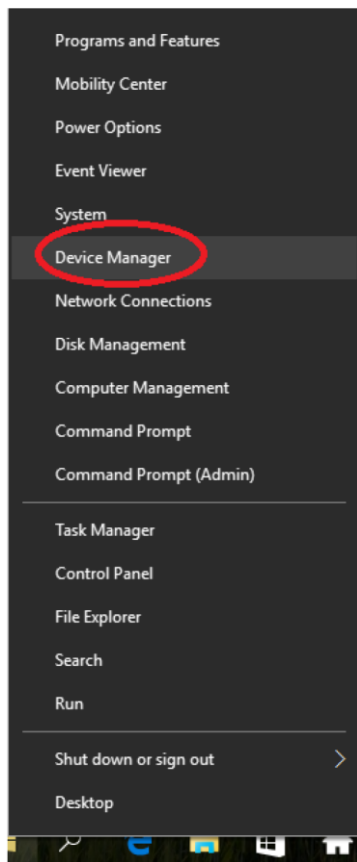


Image is different
from EK-350U

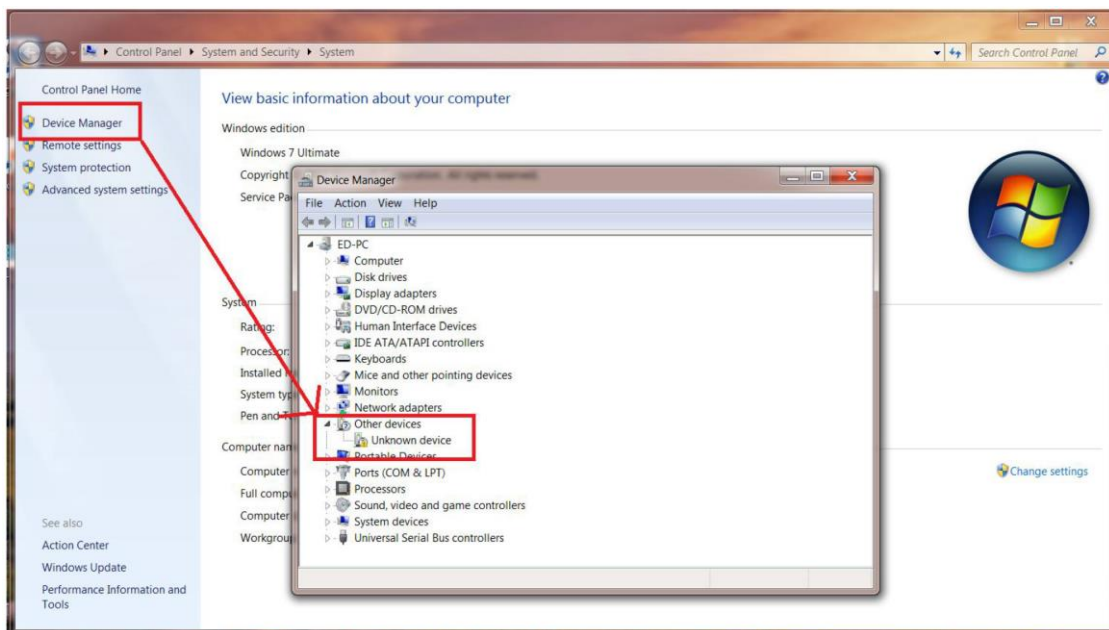
5. Open [Device Manager]

Depending on the OS setting, there may be difference in view or how to start.

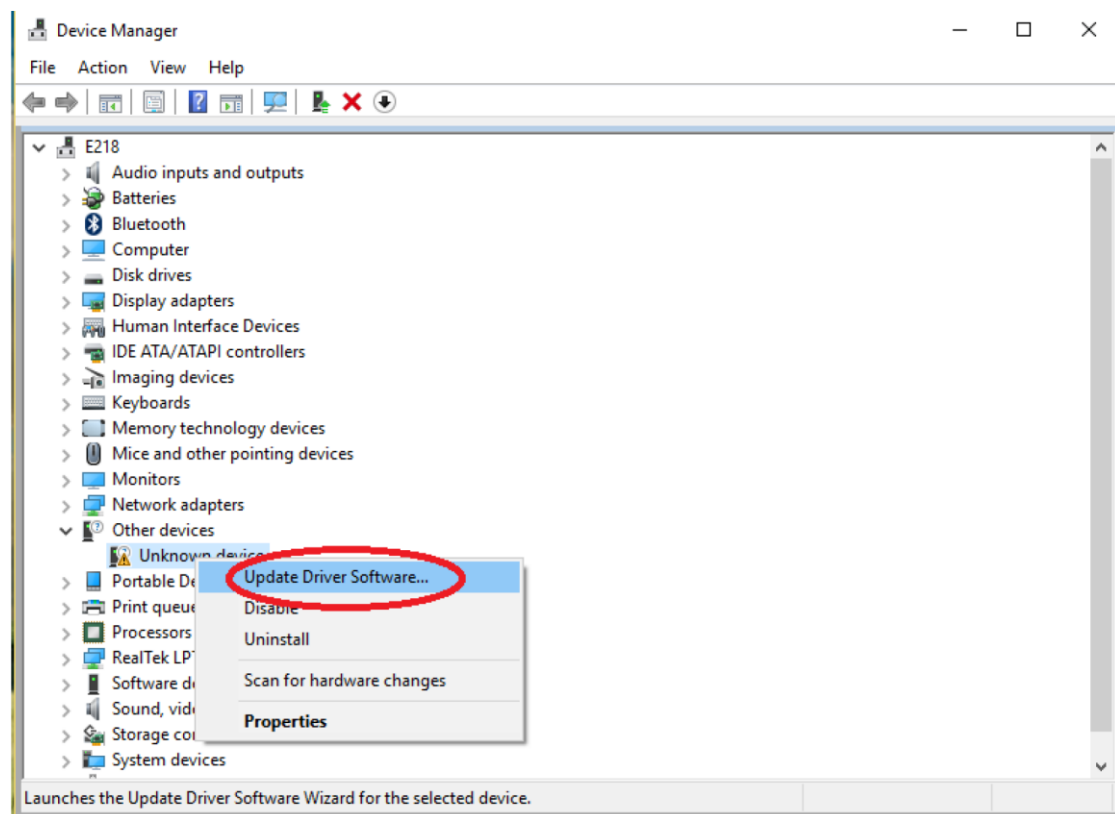
Windows 10



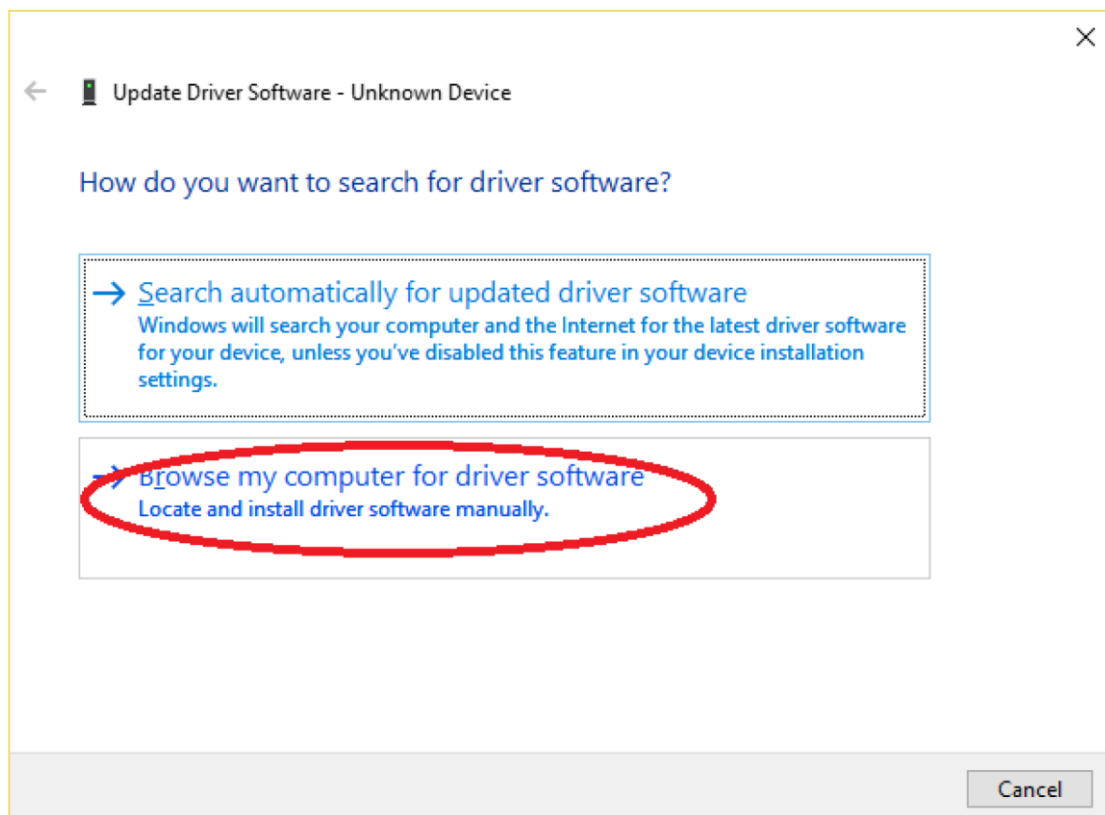
Windows 7



6. Update Driver Software from right click of mouse



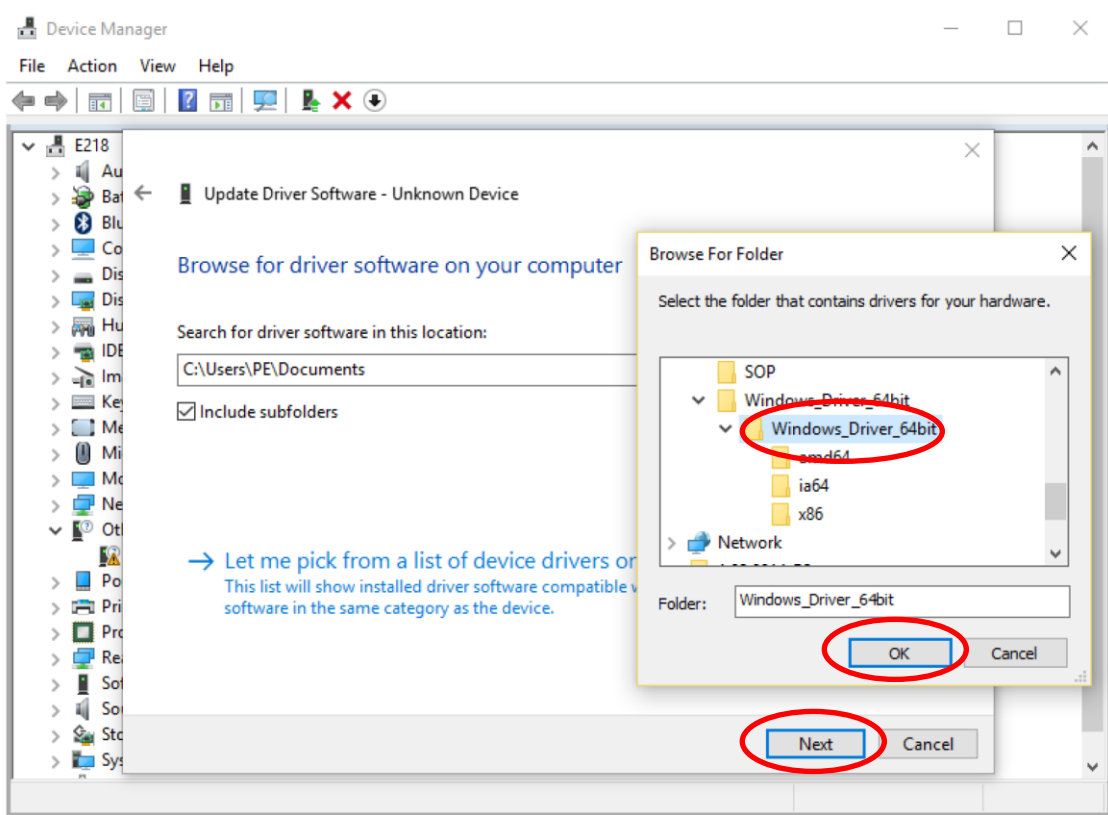
7. Select [Browse my computer for driver software]



8. Browse for driver software on your computer

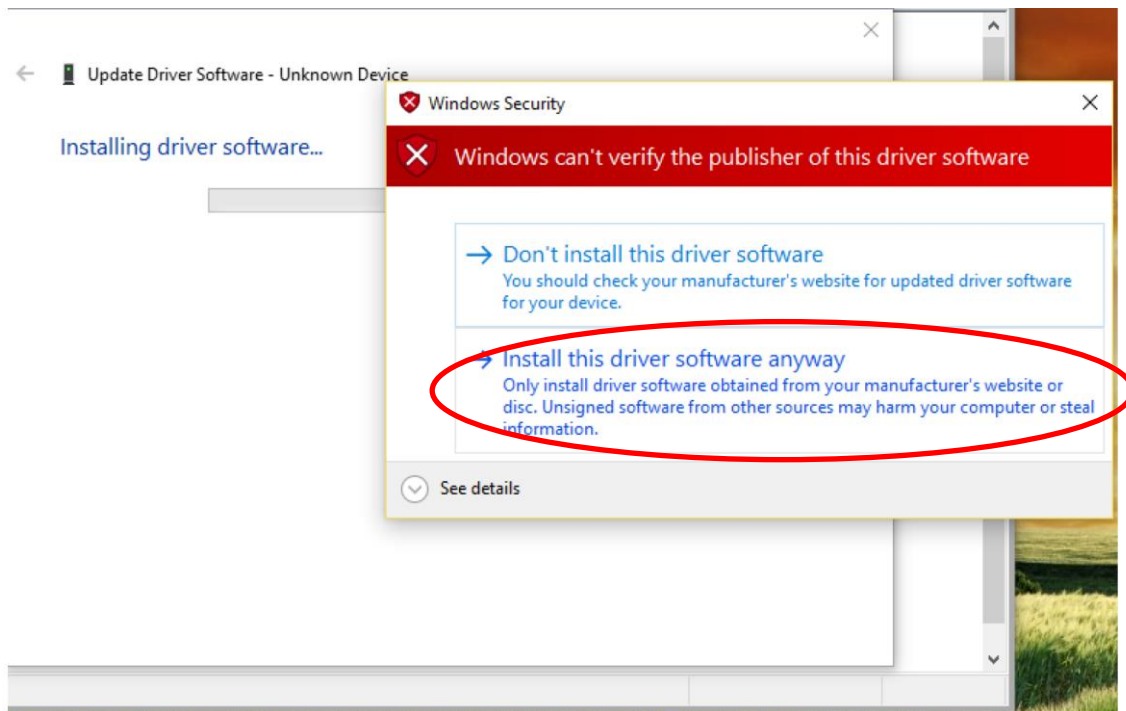
Please select the path: "...¥Windows_Driver_64bit" that we have provided.

Click [Next]

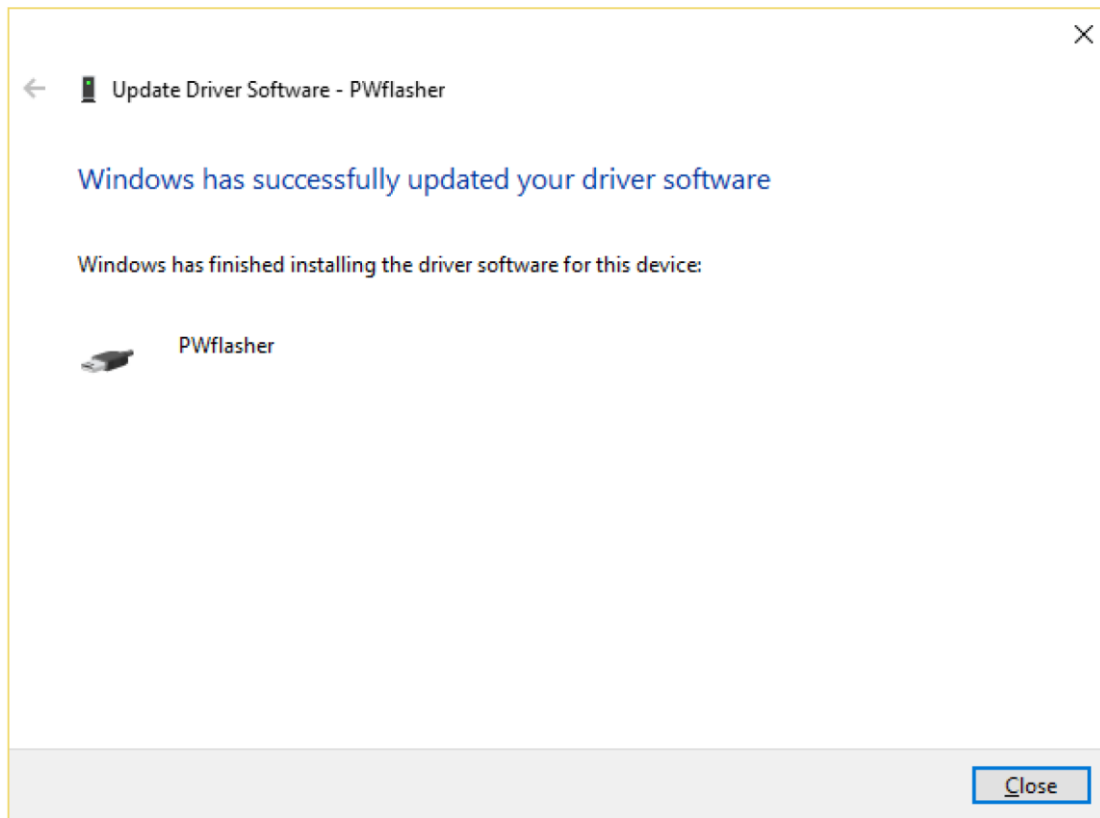


9. It should popup warning messages.

Click "Install this driver software anyway"



10. Install successfully.



This driver installation only needs to do once for each desktop/laptop

3. Updating FW V1.00 1036 to projector

- Setup projector in F/W downloading mode

(If you continue from “2. Install USB driver to PC”, you can pass the steps 1 through 4.)

1. Press [Power] + [UP] simultaneously



Image is different
from EK-350U

2. Plug-in power code



Image is different
from EK-350U

3. Keep press [power + up] button until warning LED in steady light and power LED in flashing light. (For EK-350U, until power LED is flashing light or steady light)



Image is different
from EK-350U

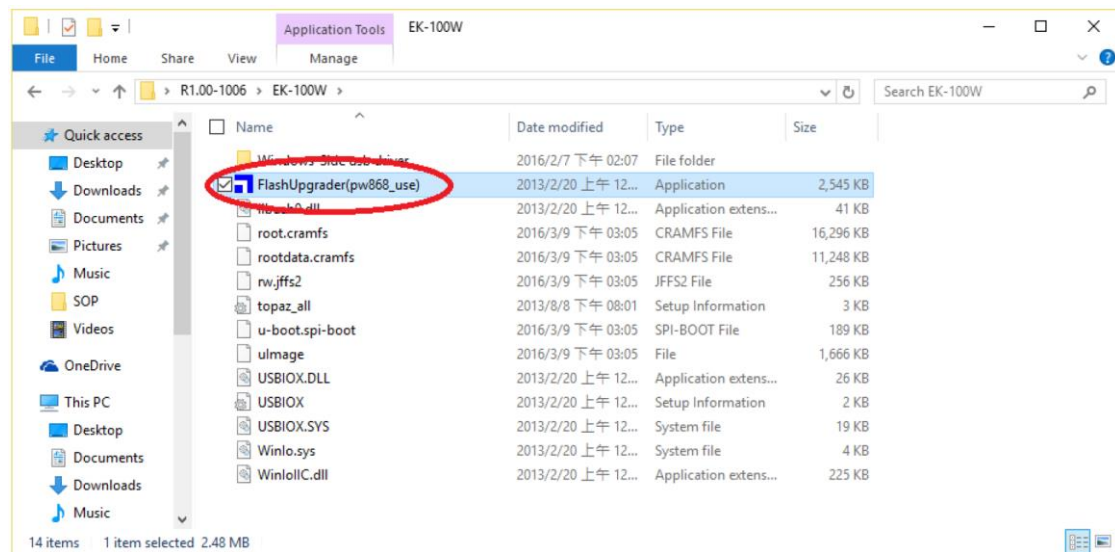
4. Connect USB Type A – B cable to desktop/laptop (For EK-350U, USB-A – micro USB cable)



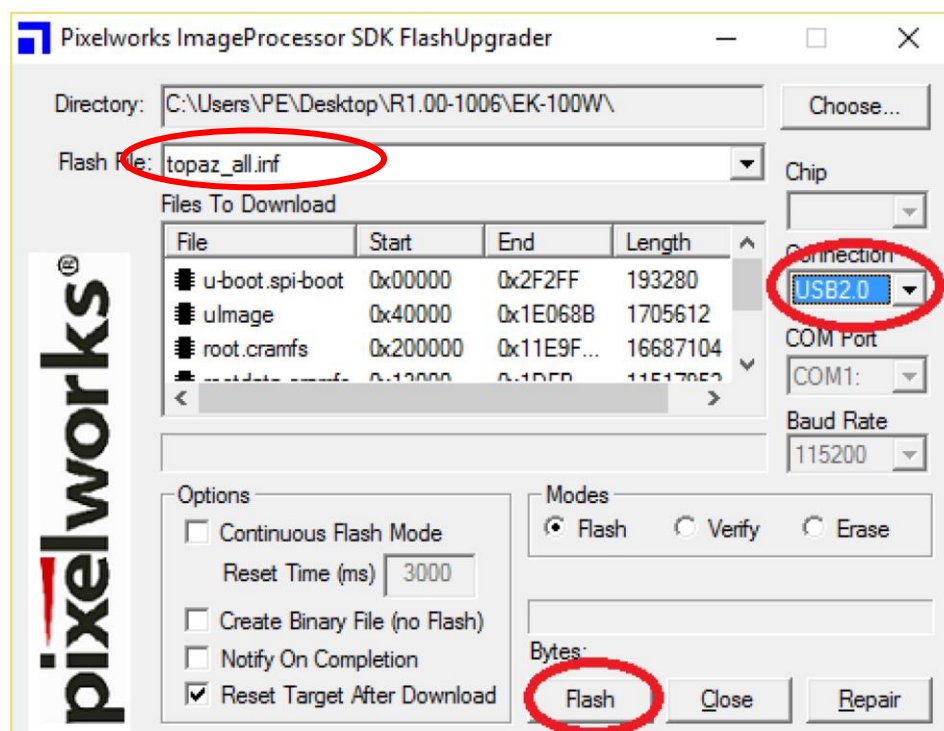
Image is different
from EK-350U

□ Start updating F/W

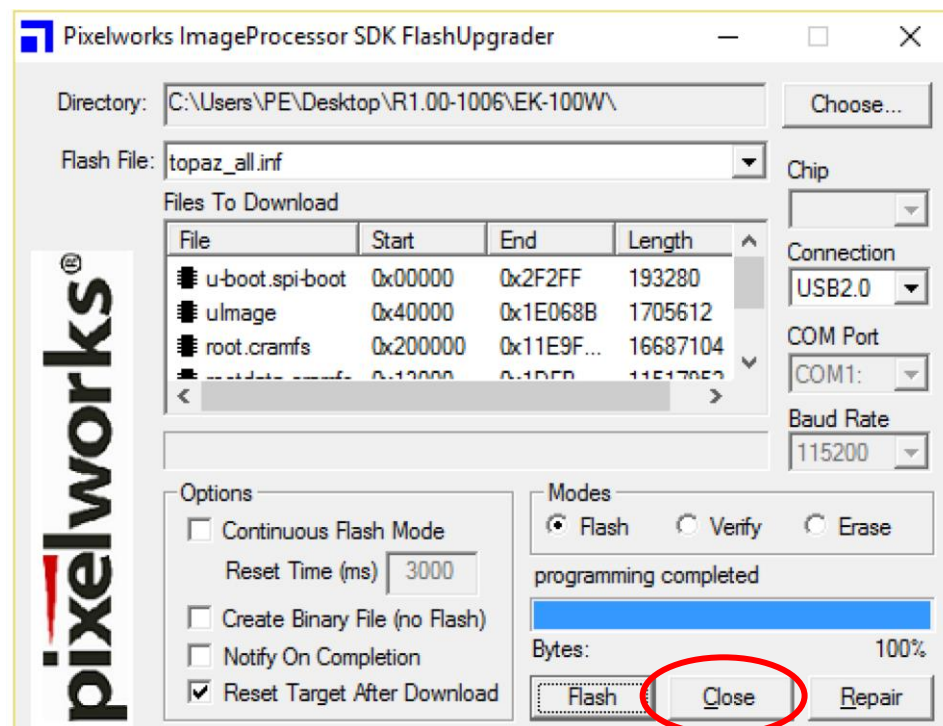
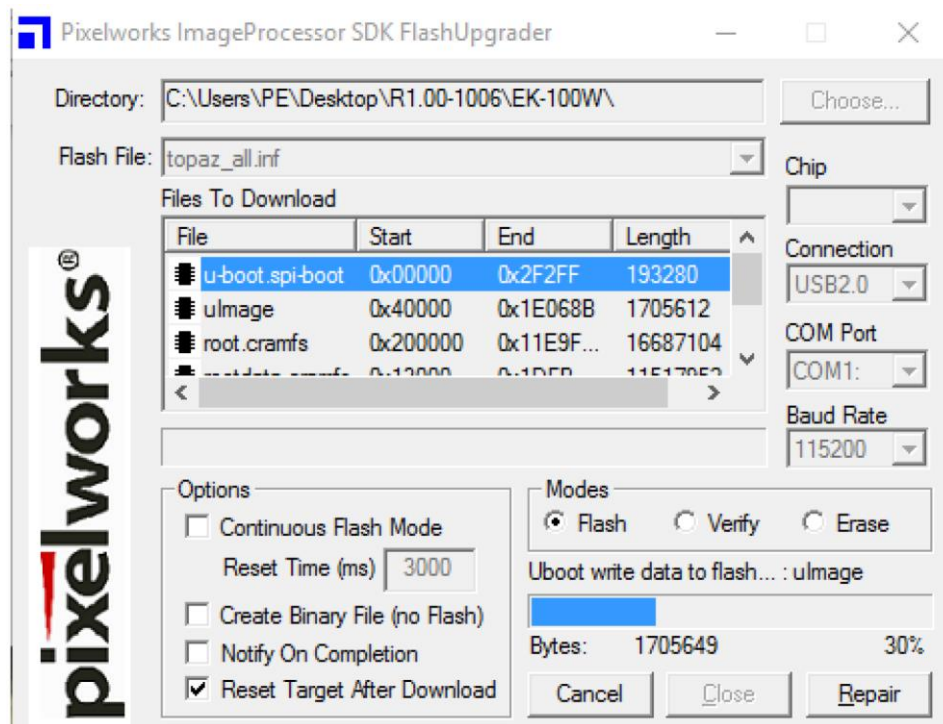
5. Launch FlashUpgrader(pw868_use) from folder



6. Select “topaz_all.inf” and “USB2.0”, and then press Flash



7. It will start to upgrade and just wait a few minutes



8. Press "Close" button to finish the process when updating is completed.
9. Unplug USB cable
10. Done.

4. Initializing the projector

1. Turn on Projector
2. Press [Power] + [Down] simultaneously



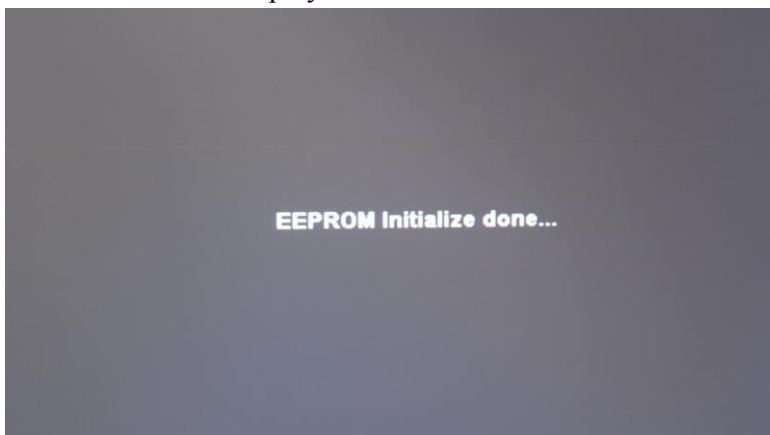
Image is different
from EK-350U

3. Keep press [power + down] button until Warning/Power LED in steady light



Image is different
from EK-350U

4. The screen will display “EEPROM Initialize done...”



5. Please wait to Power LED in steady light Green
6. Press [Menu]+[Down] simultaneously

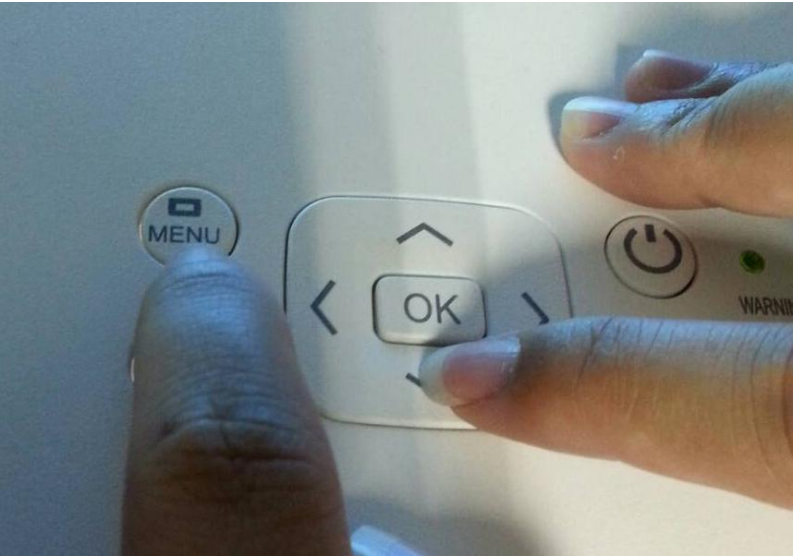


Image is different
from EK-350U

7. Press [Menu] to select "Group" and Press [Up] or [Down] to select Group "200". Press [Menu] to select "No." and Press [Up] or [Down] to select No. "0". Press [Menu] to select "Data" and Press [Up] or [Down] to select Data "+1" (For LOGO)

Service mode		EIKI
Input	HDMI1	
Image	Standard	
Group	No.	Data
200	0	+1
Ver.	1.00	EK-350U

8. Press [Menu] and [Up] and [Down] to select Group 200 No.60 Data to "+1". (For Language)

Input	HDMI	
Image	Standard	
Group	No.	Data
200	60	+1

9. Press [Power] once to close Service menu.
10. Press [Power] twice to Projector off.

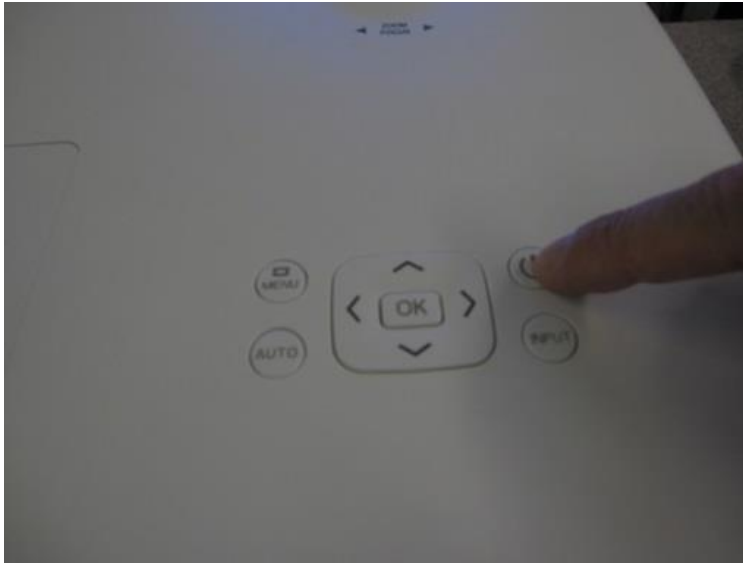


Image is different
from EK-350U

11. Please plug off the power cord and then plug in once.
Then Press [Power] to power on & double check.

12. Press [Menu]+[Down] simultaneously



Image is different
from EK-350U

13. Press [Menu] to select "Group" and Press [Up] or [Down] to select Group "200"
Press [Menu] to select "NO". and Press [Up] to "51".

Please check the original FW version:

- (1) If the projector's original FW version is V1.00_1020 ~ V1.00_1032 :

Please set Group 200,NO51,Data → **select 0**

(Press [Menu] to select "Data" and Press [Up] or [Down] to "+0".)

Service mode		EIKI
Input	HDMI1	
Image	Standard	
Group	No.	Data
200	51	+0
Ver.	1.00	EK-350U

- (2) If the projector's original FW version is V1.00_1035 :

Please set Group 200,NO51,Data → **select 1**

(Press [Menu] to select "Data" and Press [Up] or [Down] to "+1".)

Service mode		EIKI
Input	HDMI1	
Image	Standard	
Group	No.	Data
200	51	+1
Ver.	1.00	EK-350U

14. Press [Power] to exit.
15. Press [Power] twice to Projector off.
16. Please plug off the power cord and then plug in once.
Then Press [Power] to power on & double check.

Done.